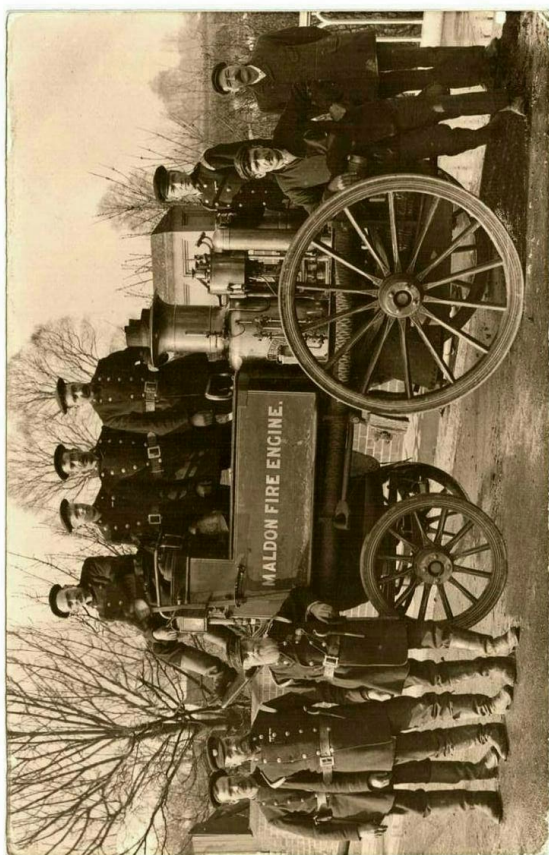
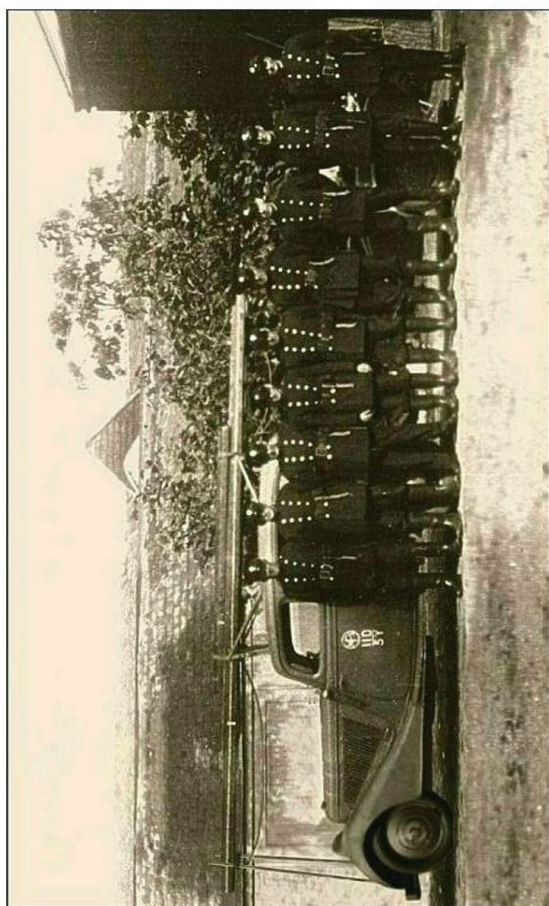


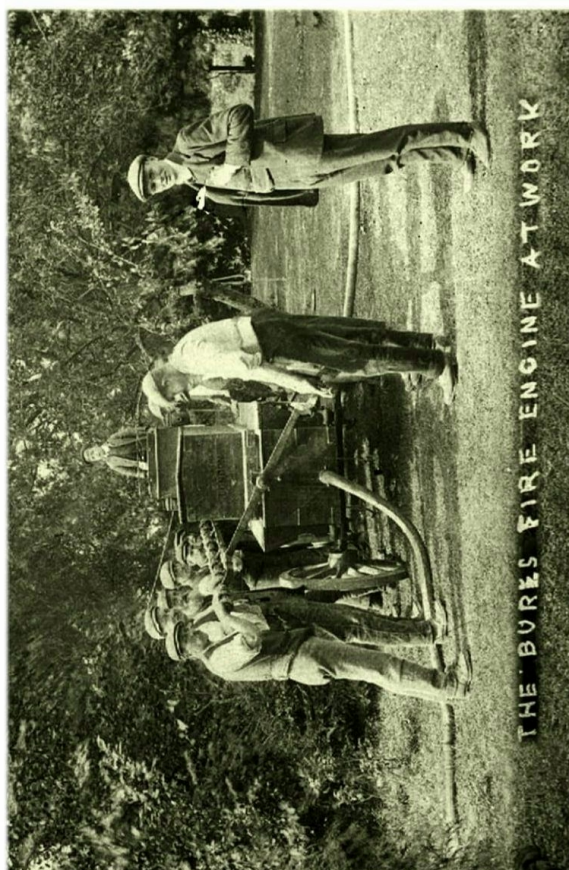
Coping with Fires in the Past



the Maldon fire engine in 1910



the Goldhanger Auxiliary Fire Service in WW-2



the Bures fire engine in the early 1900s



the Mersea Island fire brigade in 1930

130 Years of Goldhanger Parish Magazine

There has been a Parish Magazine since 1895 when the Revd. Frederick Gardner started it shortly after being appointed Rector at Goldhanger and there have only been a few breaks in publication, most notably during both World Wars.

Submit articles, as PDF to preserve layout or as plain text in an email with any images attached, by midnight on the 15th of February. Please contact the editors if you have any questions about your article.

Submit advertising (including For Sale and Wanted) by midnight on the 13th of February please.

Magazine Editors: Stephen & Chris parishmag@goldhanger.org.uk

Advertising (for
Magazine & Website) Mel advertising@goldhanger.org.uk

For Sale or Wanted - To list your items in the magazine the minimum donation is £1 per advert. If you would like to donate more it would always be welcome.

Please note: We cannot guarantee the delivery date of your magazine. Please bear this in mind when advertising functions at the beginning of the month.

Donations: Cheques made payable to **Goldhanger Parish Magazine**. You can also donate online through the Goldhanger website. If you would like to pay by BACS please contact the editors.

You can **download the Parish Magazine** in glorious technicolour each month, including back issues, at: <https://www.goldhanger.org.uk/parish-mag.html> - and the links work in the PDFs.

Tide Times

<https://www.goldhanger.org.uk/index.html>

<https://www.tidetimes.co.uk/maldon-tide-times>





From the Editors

We'd like to wish all our readers a very Happy New Year and to thank you all for your contributions to the magazine.

This month is probably quieter than most, but then that's what January is about - marshalling our forces for the year ahead after the Christmas period.

Winners of the **MegaBrain Wordsearch** for 2025 have been announced. Why not have a go for 2026 if you haven't already tried it? Prizes on offer (and fame in the magazine) at the end of the year.

The new year might also be a good time to try the **AVAGO** open mic events at the Chequers. You don't have to be a professional at anything - it's your chance to put your songs, your voice, your stories or poetry out there and have a bit of fun. Next one is 25th January in the billiard room at the Chequers from 4pm. Come along and support the performers.

Film Club is back this month with *The Roses* starring Benedict Cumberbatch and Olivia Colman (did you know they're married in real life?).

Social media and inclusivity:

It may come as a surprise to some, but not everybody in the village will be on social media (yes, really). Rather than just relying on Facebook to advertise upcoming events or dates of note it would be nice if people could also send them to us at the magazine. That way, everybody in the village can be included.

Stephen & Chris



HAPPY NEW YEAR

Coping with fires in the past

Any signs of fire today and a 999 call connects us to the Fire Service in seconds and two appliances will be on their way, one from Tollesbury and one from Maldon, and they could be here in 10-15 minutes. It wasn't like that in the past. The 1910 Maldon appliance (shown on the cover) had first to couple up the horses and it would have taken the best part of an hour to get here. During WW-2 the village had an ARP warden, a volunteer AFS and a mobile pump based in the Old Rectory barn. That was probably the fastest fire service here ever.

We know that Tollesbury didn't have its own appliance until the start of WW-2 and they have records before then of waiting for the Maldon horse drawn machine to get there while watching buildings burnt down. So there must have been other means of coping with village fires in the past, not least because before electricity arrived and with no piped gas, everyone used candles, oil lamps and open fires, and there were also more wooden and thatched houses.

We have a few newspaper reports of local fires that give some clues as to what it was like, but we can only guess what equipment was available here, based on pictures from elsewhere. It is also clear that isolated villages and country houses had to have their own equipment available, and examples of these are below. A portable pump was the essential item and could easily be moved to a pond close to the fire by fit men. Special fire buckets, kept filled with both water and sand were also very common. These had handles on the curved bottoms so that the contents could be aimed at the base of the fire. One can just imagine fire buckets mounted on the wall by the pump in The Square and a portable pump on a hand cart in the churchyard similar to the Bures example on the cover.

Extracts from newspaper reports about local fires that occurred between 1890 and 1920 are on another page in this magazine...

The 1890 report of a fire at Beckingham Hall even gives the times when the fire started and when the fire engine arrived – it took between 1 and 2 hours!

In the second report of a fire in 1890 at “farm premises near the Church”, (probably Rectory Farm, now the Old Rectory), “a messenger was dispatched to Maldon” so there was no phones or telegraph available here then.

The note by the Rector in the Parish Magazine of 1911 referring to a fire at the Parsonage (now the Old Parsonage) on the night of November 5th! – the fire was obviously put out by the villagers.



examples of village fire equipment

search for: *goldhanger past descriptions*

www.churchside1.plus.com/Goldhanger-past/Descriptions.htm

David Newman

Newspaper reports of fires in the past

Essex Newsman. 13th Sep 1890

On Monday evening a serious fire occurred at Beckingham Hall. The fire, which resulted in the destruction of a large portion of the farm buildings, commenced in one of the large barns in which a quantity of barley was stored. It was first noticed shortly before six o'clock, and in a very short space of time it had obtained a good hold. A messenger was despatched to Tollesbunt D'Arcy Post-Office, and the Essex and Suffolk fire engine from Maldon was summoned. While awaiting the arrival of the engine many willing hands assisted in trying to check the flames, and they succeeded in confining the fire in one large space. Between seven and eight o'clock the engine arrived and quickly got to work. There was a good supply of water, and the flames were prevented from making any further progress. There was a large crowd of people present. The premises belonged to the New England Company, and were insured in the Essex and Suffolk Fire Office.

Chelmsford Chronicle Oct 1890

On Sunday night a fire broke out on farm premises near the Church at Goldhanger, in the occupation of Mr. F. B. Leigh. Mr. W. J. Harvey, of the Chequers Inn, was the first to see the fire, and he immediately gave the alarm. A messenger was dispatched to Maldon for the Essex and Suffolk fire engine. The engine on its arrival quickly got to work, and there being a good supply of water, the fire was confined to the stacks.

Goldhanger Parish Magazine of 1911

The Rector wishes to thank all the kind and energetic helpers who extinguished the fire at the Parsonage on the night of November 5th, but for whom the house would have burnt to the ground, and to whom there is a recognition of their kind services.

Chelmsford Chronicle 5th May 1922

On Friday a fire occurred at Rectory Farm, Goldhanger the residence of Mr. Page. Smoke was seen issuing from the roof, and it was discovered that a beam had become ignited. The fire was put out, but not before damage to the extent of £150 to the building and £100 to the furniture had been caused.

David Newman

Goldhanger Village Hall



A modern venue for birthday parties, discos, children's parties, quiz nights & theme nights.

Comfortably seats 80 people using our chairs and tables - you are welcome to bring your own enabling you to seat more.



See [Village Hall Calendar](#) for more details of events.

Pink recycling bags are available 15 minutes before each Parish Council meeting every 2nd Wednesday of the month from 7.15pm. Purple bags are no longer available.

Gentle Yoga every Monday 7-8pm

Nikki Myers 07963 785718, youtimeyoga@live.co.uk

Chair Yoga every Wednesday 11am

Nikki Myers 07963 785718, youtimeyoga@live.co.uk

Parish Council second Wednesday of the month 7:30-9:30pm

Karate every Thursday 6-8pm

Art Club second Thursday of the month 2-4pm

Catherine 01621 788488

Film Club third Wednesday of the month (*except July and August*), doors open 7pm, film 7:30pm see *advert for details*

Carpet Bowls alternate Fridays from Friday 12th September to April 2026. 1.45pm to 4.00 pm

Village Hall Bookings

Contact Jackie Christy on 788432 or:
<http://www.goldhangervillagehall.co.uk/bookings/#form>

Web: www.goldhangervillagehall.co.uk

Facebook: [Goldhanger Village Hall](#)

X: [@Goldhanger_VH](#)

Hire charges		Goldhanger Resident Rate (per hour)	General Rate (per hour)
Monday-Friday	9.00 -18.00	£12	£14
	18.00 - 23.00	£17	£20
Saturday-Sunday	9.00 - 18.00	£17	£20
	18.00 - 23.00	£22	£27

Community Page

Bellringing www.bellringing.org/learntoring/

Every Wednesday 7:30pm - 9:30pm and for services on Sundays. Newcomers welcome. Contact Sarah Scannell 07789 990942 or email goldhangerbells@outlook.com.



Coffee mornings

Community Room at St. Peter's Church on Tuesdays between 11am and 12noon. Everyone is welcome. Pop along, bring your friends, and have a chat over coffee.



Shanties in the Pub

Billiards room at the Chequers every other Tuesday (from 12th October) from 7pm. Just join in the responses or take a lead as you wish. Ooo-Aaaar!



AVAGO

Open mic evening at the Chequers. Monthly. Billiards room from 4pm. Dates will be published in the magazine monthly.



Goldhanger Sailing Club www.goldhangersailingclub.org.uk

All types of sailing, including sailboarding and canoeing, with racing organised on Sundays during the season, there is something for everyone who loves the water.



Mother's Union

4th Friday of each month at 1.45pm at Honywood Hall, Hall Road, Great Totham.



Stamps for the Hospice

Your used stamps can be dropped in to the Hospice shops in Maldon or the Bentalls Centre in Heybridge.



Maldon District Council Monthly Surgeries

1st Saturday of the month. Queens Head Tolleshunt D'Arcy. 12 noon to 1pm.



Goldhanger Church Services

Sunday 4th Jan: 9.30am Holy Communion

Sunday 11th: 10.00am Lay led service

Sunday 18th: Combined service with Beacon parishes at Great Totham, 10am

Sunday 25th: BCP Communion

Weekday Holy Communion Services

Weekday Holy Communion service from The Book of Common Prayer

Every Wednesday at St Nicholas, Tolleshunt D'Arcy at 10.00am

And every Saturday at All Saints, Little Totham at 5.30pm

Please get in touch with Rosie Pollock or the churchwardens if you are considering baptism for yourself or your children, confirmation, and weddings Please contact Rev'd Andrew or Rosie for funeral arrangements.

Parish Prayers

If you would like someone, an event or concern, included in church prayers please contact Kim Evans on 788698 email kwestwood58@aol.com or George Bunting (details on next page). Votive candles are lit at Sunday Services.

Raise free donations for Goldhanger church through Easyfundraising

Go to <https://www.easyfundraising.org.uk/causes/stpeterschurchgoldhanger> and join for free.

St. Peter's Church Book of Remembrance

If there is someone special you would like to be included, please send an email with details to Beckywillisbecky@btinternet.com. There is no charge, but a donation to the upkeep of our beautiful church is always very much appreciated.

Thank you for your support. Please contact Rosie Pollock, for any queries or help.

I'm reading a book about anti-gravity. I can't put it down.

St. Peter's Church Goldhanger

Priest in Charge of the Blackwater Benefice*

Vacancy

Associate Priests

Reverend Andrew
Vince (Assistant
Agricultural Chaplain)

07952 144613
andrew.vince15@gmail.com

Reverend Sarah Clare

07762 840905 / 01621 868819
sarahclare9@gmail.com

Church Wardens:

Mr George Bunting

01621 929690
gvbunting@gmail.com

Mrs B Abrey

01206 384394

Safeguarding Officer

Vacancy

Benefice Administrator

Rosie Pollock
(For weddings,
baptisms etc). Available
on Tuesday and
Thursday mornings

07908 776750
office.blackwaterbenefice@gmail.com

Church flowers

Mrs Elaine Clark

788686
elaclark@me.com

* Goldhanger, Little Totham & Great Totham and Tollesbury, Salcott, Tolleshunt D'Arcy and Tolleshunt Major

St. Peter's Goldhanger website: www.st-peters-church.goldhanger.org.uk

No Flags for January





Bakers of Danbury Ltd

High quality craftsmanship

CONSERVATION | RESTORATION | NEW BUILD

Our project management team and in-house expert tradesmen have long been associated with the many fine historic, churches and listed buildings within the Essex area:

As building contractors we offer:

- Repair and restoration to historical & listed buildings
- Contemporary domestic and commercial conversions
- Luxury new build extensions
- Traditional timber windows and doors
- Bespoke joinery and furniture
- Polite tradesmen and minimal disruption

T: 01245 225876

W: www.bakersofdanbury.co.uk

E: info@bakersofdanbury.co.uk



Established over 145 yrs



Your home
Your care
Your choice



alina homecare
Care at Home

We offer a wide range of
award winning home care
helping you stay
independent in your own home.

Our highly trained and
compassionate carers
make life easier.

Choose from regular visits or Live-in care.

Let's
chat

01621 983222
alinahomecare.com



**Top 20 UK
Home Care
Group Award
2021 - 2025**





PC Doctor
Operations Limited

For all your computer requirements including:

Virus prevention, detection & removal
Broadband, Networking, Wireless & Firewall set up
Email & SPAM filtering
Hardware Repairs & Upgrades
Software Faults & Crashes
Backup Solutions & Data Recovery
Software Installation & Removal
Hardware & Software Supplied
Website Management • Computer Training



Office: 01621 891064 • Mobile: 07990 565336

Email: support@pcdocops.co.uk

Website: www.pcdocops.co.uk

Monthly subscription service available to provide complete "peace of mind" and allow you to spread the cost of your IT requirements.

Please contact for further information.

Allotments.

If you would like an allotment please phone or e-mail

Clive Cheeseman

cheeseman3@sky.com

01621 788433



chelmsfordplumbingandheating.co.uk | sales@chelmsfordplumbingandheating.co.uk



CHELMSFORD
PLUMBING & HEATING

01245 478588

**A trustworthy family run business specialising in Gas,
Oil, LPG, Electrical & Plumbing services**

- ✓ All calls are answered personally
- ✓ Confirmed bookings given
- ✓ No job too small!

Boiler Installs, Servicing & Repairs

New Heating Systems

Plumbing Repairs

Electrical Services

WORCESTER
Accredited Installer

BOSCH

ehc

GRANT

NICEIC
APPROVED
CONTRACTOR

OFTEC

safe
REGISTER

Christmas Greetings pages

Many thanks to all who signed the Christmas Greetings pages and donated to this year's charity. We raised £350 for Little Havens Hospice, a local charity based in Southend who have thanked Goldhanger for their donation.



Havens Hospices
226 Priory Crescent
Southend on Sea
Essex, SS2 6PR
T 01702 220 350

Wednesday, 03 December 2025

Julia Bourn
Goldhanger Village
16A Fish Street
Goldhanger
MALDON
Essex
CM9 8AT

Thank you so much
for your kind donation
£350.00
to Little Havens



Dear Julia & residents of Goldhanger Village,

We are writing to say a **BIG, BIG** thank you for your really kind donation of £350.00 to Little Havens. Your support and generosity is nothing short of overwhelming. We know it's difficult for everyone right now, but every penny you donate has an immediate impact on our hospice care. Please pass on our heartfelt thanks to all.

Everyone deserves the best possible care throughout their whole life's journey – and you are making that possible. The care we provide is absolutely free of charge. Around 71% of the funds we need to care for local families are contributed by very special people like you – thank you again – it's so appreciated.

Best wishes,

Lorraine Collie
Fundraising Team

**“ If Lucy needs to go
to the hospital our
family unit has to be
broken up, but at Little
Havens, we can be
together. ”**

You're in charge of what information Havens Hospices has about you, and what you want to receive from the charity. Everything is laid out in our Privacy Policy which you can read on our website. But you can change how we contact you by emailing changeme@havenshospices.org.uk, visiting havenshospices.org.uk/update or calling 01702 220 305.

**Every one of us
Making every day count.**

Havens Hospices is registered in England and Wales as a company limited by guarantee.
Registered address: 226 Priory Crescent, Southend on Sea, Essex, SS2 6PR.
Company number 2805007 | VAT Registration Number 194 8870 48 | Registered Charity Number 1022119





Santa 5K Fun Run - Sat 6th December

A fantastic effort from the runners and walkers at the Santa 5K Fun Run on Saturday 6th December. The weather was reasonably kind after a wet start to the day and everyone returned to the hall for refreshments & recuperation! Thank you to Fi for organising and everyone who took part. It was a lovely social morning and £95 raised towards the Village Hall.

~ Jill Crooks

Christmas Bingo - Sat 6th December

We had a great evening at Christmas Bingo on Saturday 6th December. Our entertaining caller Mike Lawrence dazzled us all with his amazing Christmas Bingo outfit (you can see it in full colour in the magazine online). The hall was packed with bingo revellers young and not so young with lots of gifts, cash prizes and raffle prizes won. Thanks to all who support these village events, they're great fun and raise money to maintain and improve the Village Hall for our community





Goldhanger Village Hall Film Club



Wednesday 21st January
7pm for 7:30pm

THE ROSES



Life seems easy for picture-perfect couple Ivy (Olivia Colman) and Theo (Benedict Cumberbatch): successful careers, a loving marriage, great kids. But beneath the façade of their supposed ideal life, a storm is brewing - as Theo's career nosedives while Ivy's own ambitions take off, a tinderbox of fierce competition and hidden resentment ignites.

The Roses is a reimagining of the 1989 classic film The War of the Roses, based on the novel by Warren Adler.

£8 pay on the door (card or cash)

Plenty of parking behind the hall / lifts available from the village if required, contact Jill 07734 069609 or Debbie 788709



Proceeds in support of the Village Hall, Head Street CM9 8AY



AVAGO

Open mic evening at the Chequers

Have you ever wanted to:

Sing a song?

Play your musical instrument?

Read some poetry or prose?

Do a little stand-up routine?

Well, now's your chance to **AVAGO**.

The next event will be in the billiard room of the Chequers on **25th January 2026** from 4pm.

Supportive audience also required.



Characters of Goldhanger Past

A Talk & Supper on
Saturday 28th February 2026
at the Village Hall

The Village History Tours over the Gala weekend were very popular, some of the characters that lived in our historic houses have interesting stories to reveal. Inspiring and adventurous, find out how they left their mark on Goldhanger and the wider world.

More details to follow in the January magazine, if you'd like to reserve a space contact jillcrooks66@icloud.com



A.G. Smith

Est. 1912

Funeral Directors & Monumental Masons

- 24-hour caring, supportive, professional
- Private chapel of rest
- Religious and non-religious funerals
- Green & woodland funerals
- Mercedes Benz hearse & limousines
- Hand crafted memorials
- Funeral plans to give you peace of mind - Golden Charter Funeral Plan Introducer

Maldon: 01621 854 293

7 Spital Road, Maldon, CM9 6DY

Southminster: 01621 774 557

44 Station Road, Southminster, CM0 7EW

enq@agsmithfunerals.co.uk



FUNERAL PLANS FROM
Golden Charter
Smart Planning for Later Life



Serving our local community since 1912 | www.agsmithfunerals.co.uk

Winter Reading Challenge 2026

It's time for the Winter Reading Challenge 2026, so let's meet The Pawfessionals!

They're a group of friendly animals who live in Essex and, with the help of Essex Year of Opportunity, will find their dream jobs this winter.

Sign up and in join at your local Essex library. Complete challenges on your own sheet and collect stickers as you go. Complete the tasks and have a chance to enter our amazing prize draw!

Join in from Saturday 10 January to Sunday 22 February.

<https://libraries.essex.gov.uk/news/winter-reading-challenge-2026>



Police were called to a day care, where a three-year-old was resisting a rest.

Poppy appeal – November 2025

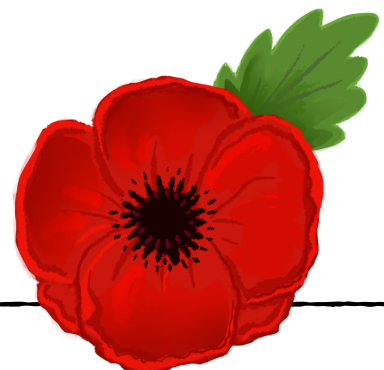
The local Tollesbury branch of Royal British Legion would like to thank everyone in Goldhanger who donated to the poppy appeal.

Many residents know their local door to door collector and we are always grateful for your support.

Every penny is appreciated.

Goldhanger donations totalled £418.21

Thanks Again,
Julia, Clive & Chris



The Chequers Inn



The Square, Goldhanger, Essex, CM9 8AS

Tel: 01621 788203

www.thechequersgoldhanger.co.uk

Great home cooked food. Several local suppliers used.
Wonderful selection of cask ales, beers wines and spirits.

Great range of non-alcoholic drinks.

Pub games including bar billiards, darts and dominoes.

Dogs welcome.

Real fires and log burner.

Regular live music and events.

Great hospitality and friendly service.

Take away food, coffees, drinks & cakes available.

Dominic and the team look forward to welcoming you soon.

GOLDHANGER PARISH COUNCIL

Notes of the Parish meeting held on the 12TH Nov 2025. Full minutes can be viewed on the website or village noticeboard once they have been approved at the next Parish Council Meeting.

www.parish-council.goldhanger.org.uk

clerk.gpc@outlook.com

Chairmans Announcements

The Chairman thanked Cllr Sargeant on the renovation of the phone box that was looking splendid.

Thanks were also given to Cllr Cheeseman for reporting flytipping on Maldon Road
The Maldon Xmas Market at the Prom had been posted on Goldhanger Social media
After last meetings discussions regarding charity door knockers an enquiry had been sent to MDC, a response had been received and followed up, no further response as yet.

Pink sacks were requested 22/10 – not yet delivered

Fish Street surface water works completed – as built requested

Ditch adjacent to Noth Maldon Growers reported and actioned by MDC

Allotment brochure is progressing

Planning Applications

25-00915 The Cricketers Public House – 33 Church Street

Change of use of existing public house to dwelling with associated car parking and amenity area

No comment made by GPC

Planning Decisions by MDC

25/00379 8 Head Street Approved

Planning Matters

The Council had met with MP who offered her support and was well attended by residents

Correspondence

A letter had been received confirming the Asset of Community Value for the Chequers

Follow up letter had been received regarding Bus Shelter Licence. A draft response would be sent asking for further detail

Letter of Notification re nomination of Chalet Field as a non designated heritage Asset was noted

Playing Field and Play Area

Clerk advised that she had ordered a playground inspection which could take up to 20 weeks.

Speed watch Group

High Speeds were still being recorded in Maldon Road

Other

Discussion of Village Design Statement – this was deferred

Review of Financial Regs/Standing Orders and Asset register Review were undertaken for 2025/26 with no changes required

Bleed Control kits were discussed and felt not necessary as one had recently been installed at the pub.

No further response had been received from MDC regarding garage plots

Next Meeting on 10th Dec 2025

GOLDHANGER PARISH COUNCIL

Notes of the Parish meeting held on the 10th December 2025. Full minutes can be viewed on the website or village noticeboard once they have been approved at the next Parish Council Meeting.

www.parish-council.goldhanger.org.uk

clerk.gpc@outlook.com

Planning Applications

25-00613 Land off of Head Street

The application had been amended by the submission of updated information. Further comments were submitted by GPC

The application should be heard in Feb 26

The Council had met with MP who offered her support and was well attended by residents

Correspondence

Correspondence had been received about digital infrastructure from Connexin

Speed watch Group

High Speeds were still being recorded in Maldon Road

Allotment Rents

It was suggested that rents would run from the 1st May – 30th April in future to assist with accounts. Rent review would be carried out in March

Precept

Precept was agreed at £12,750 for 2026/2027

Auditor

It was unanimously agreed that Heelis and Lodge would be appointed as auditor for 2025/2026

Assertion 10 Compliance – Section 1 of the AGAR

The Clerk had very recently attended a Webinar regarding this and one of the main issues is that from the 1st April 26 the clerk must have a council owned email address and it was best practice for Cllrs to have these too. Also website enhancements may be needed and a community website may not be sufficient. The Clerk would look at the different options (operational and financial) and would report back to Council as soon as possible

Electoral Register 2026

Electoral Register was now available if Cllrs required it

Other

Clerk had requested approval from Council for her to attend a GDPR webinar which was agreed

Next Meeting on 14th January 2026



Keeping the county warm



Fuel Services

Contact BFS for prompt delivery of your domestic heating oil direct from our local Danbury Fuel Services depot. You'll find no better service, no better value.

T 01245 425251 www.bfsfuelservices.uk

Christopher
THE LOCKSMITH

ARE YOUR LOCKS BEHAVING BADLY?

We Value Old Fashioned Customer Service
A Local Trusted Family Business Since 1989

 Specialist in UPVC & Wooden Doors

 No Call Out Charge

 No Fix No Fee

 All Work Fully Guaranteed

 10% Senior Citizen Discount



For More Advice & Help Call Christopher:

07772 111 222

www.christopherthelocksmith.co.uk

If you would like a birthday or congratulations message (or any other message) included in the magazine then please let us know.

(See inside front cover)

Photos of village events are always very welcome.



Ministry Team's Message

Beginnings are always delightful, the threshold is the place to pause.” So said the German writer, Goethe. I’m not sure that I entirely agree with him. A new beginning can be a time of excitement and joyful anticipation. But beginnings can also be anxious times, when we feel apprehensive - perhaps even fearful about what the future may hold. However, I think there is truth and wisdom in Goethe’s words about thresholds.

A threshold is a crossing point; a boundary where we step from one space or situation into another; a place of transition from the past into the future. In the Bible thresholds are often holy places – places of transformation and encounter with God.

The ways in which we mark New Year - with parties and fireworks; by making New Year resolutions; with church bells ringing out the old and in the new; or the Scottish custom of “first-footing” – all suggest a deep-seated sense that each New Year offers us a kind of threshold moment in life.

Making time to pause at the threshold of the New Year creates an opportunity to look back and reflect on the year that has passed and to look forward towards the year that is to come. It’s a good time to draw on the Christian practice of Examen – looking back prayerfully and noticing where God has been with us in both joyful and difficult times; looking forward in faith that God will be with us in the future too; and seeking God’s blessing and direction for our lives.

In the New Year our church calendar includes the celebration of the Baptism of Christ, which this year falls on 11th January. In church we will hear the Gospel story of Jesus being baptised in the river Jordan by his cousin John. This story marks an important threshold for Jesus: the moment when he stepped out from life with his family in Nazareth and into the public ministry of preaching, teaching and healing which led ultimately to his death on the cross, and beyond to the resurrection which we celebrate at Easter. For Jesus, the threshold of baptism was also a moment of profound encounter and affirmation, when he heard a voice from heaven saying, “This is my Son, whom I love; with him I am well pleased.”

Hearing this story at the beginning of the New Year reminds us that the baby whose birth we celebrated at Christmas grew up to be the man who shared fully in all the joys and sorrows of human life. The child who was named Emmanuel – God with us – is not only with us at Christmas, but through the whole of life. God is with us at every threshold we cross, in every new place and situation we find ourselves. So, whether the New Year fills us with apprehension or delight, taking a moment to pause at the threshold and remember that God loves us and is with us through whatever lies ahead is not a bad way to begin.

Reverend Jo Wood
Team Vicar Designate
The Waterside Parishes

**DOMESTIC APPLIANCE
REPAIRS**

Prompt and Reliable Service

Washing Machines—Dishwashers
Tumble Driers—Fridges & Freezers

NEW APPLIANCES SUPPLIED
AT COMPETITIVE PRICES

Also Large Stock of New & Used
Spare Parts

PLEASE RING ALAN TAYLOR

01621 779640

Mobile: 07885 483595

Family Run Business
Est. 20 yrs

>>> Could **YOU** be a **Blood Runner**? <<<



↓ See our article ↓

EssexVoluntaryBloodService.com

Word of the Month

Oikology: *noun.*

The study or science of
housekeeping



B P A Kennedy
Plumbing and heating engineer

Gas and oil boiler servicing/repair

New boilers

Central heating up grades/repair

New radiators

Desludging available

New bathrooms

Ball valves etc

Telephone :

**07786 954656 or
07879 643583**

Thank you – Speedwatch Group

I would like to thank the speedwatch group, who give their time regularly to make our village safer, your efforts are appreciated.

On behalf of the residents and Parish Council,
Julia Bourn



Carpets and Vinyls Seagrass, Sisal & Coir

**From Nic Lawrence
Your Local Fitter**

**Choose at Home
Re- fits also undertaken
No Job Too Small
Free Estimates
Very Reliable 25 Years Experience
01621 869344
07771 632028**

Your Goldhanger Wordsearch Megabrain 2025 :-

Maureen Cheeseman



Carole

Maureen

The top two Megabrain Wordsearchers who had battled quiz for quiz throughout the entire year got together at The Chequers with other megabrainers to accept their Xmas presents and the trophy.

Here's how the top 12 positions panned out:-

Pos.	Megabrainers	Score
Winner	Maureen Cheeseman	31
1 st Runner up	Carole Russell	30
2 nd Runner up	Lorraine Alford	27
4 th	Ruth Jolly	21
5 th	Mo Brooks	18
6 th	Ian Moore	15
7 th	Jill Crooks	14
8 th	Janet Craske	11
9 th	Chris Rowland	6
10 th	Greg Lake	5
11 th	David Harding	4
12 th	Liz Martin	3

Calling all other Goldhangerites - This could be you in 2026!

Just complete the 'wordsearch with a difference' opposite to get the ball rolling...

Megabrain Wordsearch 2026 No. 1-Europe

Difficulty level 1 (2 pts)

Well done to our 2025 Megabrain winner (see opposite). The new season starts now however and the trophy is back up for grabs!

Happy sleuthing to all Goldhangerites! Here goes:

20 European countries are hidden in the grid below. But there is NO LIST to help you! THEN, when you've found all 20, the 27 unused letters read as a clue to a 21st. Email your answer to pfrench2@hotmail.com to be immortalised in next month's magazine! Good luck!

As you may be new to this, I've done the shortest one for you! The well-known island of ATLAM!

C	A	Y	R	A	G	N	U	H	P	M	E
A	D	N	A	L	E	C	I	I	U	C	T
I	Y	N	A	M	R	E	G	I	E	A	L
N	A	I	G	R	O	E	G	E	D	O	F
A	C	T	H	I	S	L	R	N	P	D	K
B	U	R	L	S	E	G	A	A	N	A	R
L	E	S	O	B	U	L	G	A	R	I	A
A	C	L	T	A	E	R	L	C	A	N	M
T	N	E	A	R	T	N	P	T	I	O	N
V	A	S	I	R	I	I	L	Y	V	T	E
I	R	I	L	F	U	A	A	N	C	S	D
A	F	I	U	S	M	S	W	E	D	E	N

Note: Usual rules apply – diagonal, horizontal and vertical words forwards and backwards, letters can be used more than once and unused letters read as per a book to form the hidden question or clue.

Oh, and in case you think this was a doddle, it is just a level 1 puzzle – by the time we hit December it's level 4 time!

NB. The answer has 9 letters



SH
SIMON HOULDING
EST. 1997

CURTAINS | UPHOLSTERY | BLINDS | SHUTTERS | INTERIOR DESIGN
QUALITY IN EVERYTHING WE DO
www.simonholding.co.uk | 01621 859 484 | 07990 972 676

Mannequin
INTERIORS
BY RUTH HOULDING

winner of
Maldon 2024
Conservation
Awards

DJWAIT
AND SON

also
highly
commended
Maldon 2024
Conservation
Awards

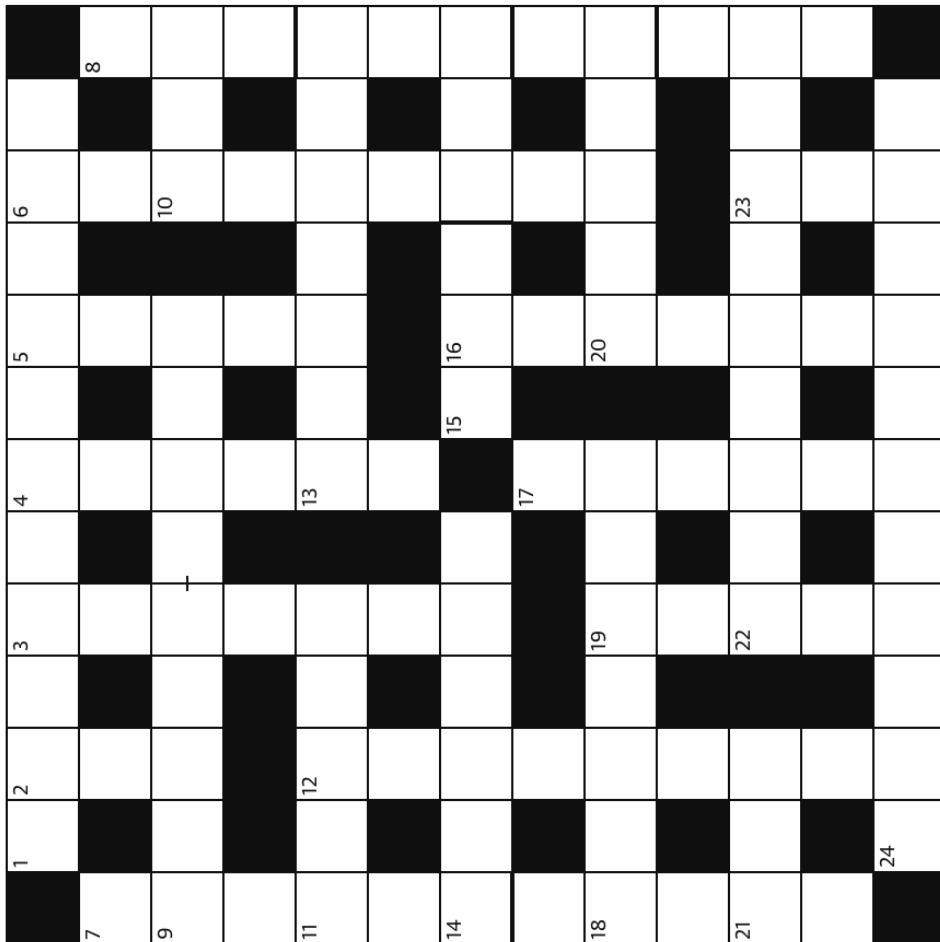
building contractors

*your complete, fully insured,
family owned, building service*

07742 957773

01621 334357

www.djwaitandson.com



Across

- 1** Family member - type of clock (11)
9 NOT LIKE THIS (5-4)
10 Black and white bird (3)
11 Russian spirit (5)
13 Dead skin at edge of nails (7)
14 Variety of apple (6)
15 Item used by mountaineers to cut footholds (3,3)
18 __ cushion (7)
20 Game of numbers (5)
21 Bath __ University (3)
22 Sly leaver (anag) - on an individual basis (9)
24 Prehistoric reptile - protect lady (anag) (11)

Down

- 2** Bitterly cold (3)
3 Give a running commentary on (7)
4 Complete failure (6)
5 English river (5)
6 Waiting for something (9)
7 Dickens novel (6,5)
8 Be in full agreement (3,3,2,3)
12 Lacking in harmony (9)
16 Relating to heat (7)
17 Having burning desire (6)
19 Puzzling question (5)
23 Supposed straight line between landscape features (3)

Answers next month

Online games and puzzles to keep you amused

Online games and puzzles: <https://www.games.co.uk/games/puzzle>

Online jigsaw puzzles: <https://www.jigsawplanet.com/>

Online brainteasers, maths puzzles, word games, sudokus and memory games: <https://www.mindgames.com/>

Kids Quiz

1. Which sort of animal is Eeyore in the Winnie-the-Pooh children's stories?
2. What flower is traditionally worn on Remembrance Day?
3. Complete the saying, 'too many cooks spoil the...!'
4. In which season do leaves start to fall off trees?
5. How many extra days are there in a leap year?
6. The countries of China and India are on which large continent?
7. What is the name of the main residence of the king in London?
8. In which sport do you use a bow to propel arrows at a round target?
9. The Romans came from which modern day country?
10. How many letters are there in the alphabet?

Answers on page 32

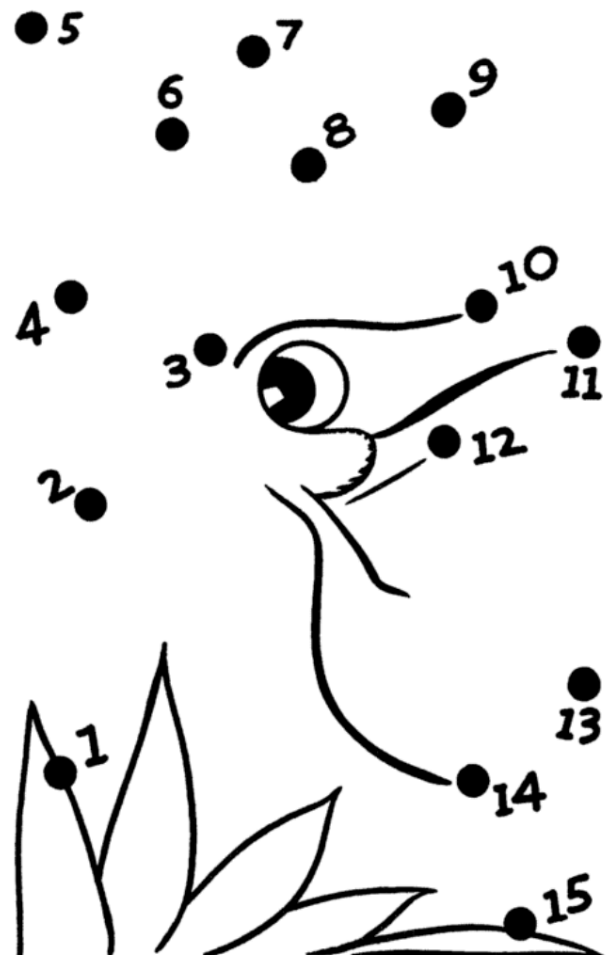
Why do bees hum?

Because they don't know the words.



DID YOU KNOW?

Australia was originally called New Holland



Children's Pages

(Adults can join in too)

Get your colouring pencils out





Memorial Stonemasons

Established in Danbury 1878

Bespoke hand-carved designs
Personal inscriptions
Restoration and cleaning

Contact us to discuss your requirements
and a free no obligation quotation

01621 502 262
agsmithfunerals.co.uk
enq@agsmithfunerals.co.uk



Bespoke memorials in association with AG Smith Funeral Directors

Broadleaf Fencing



For all your fencing needs www.broadleaffencing.co.uk

- ✓ Experienced
- ✓ Competitively priced
- ✓ Highly rated



Supply and install fences & gates
Bespoke pergolas & decking
Fence & gate repairs
Paving & patios

Recipe of the month

Cheese, tomato and pesto toastie

Preparation time

Less than 5 minutes

Cooking time

Less than 10

Serves

Serves 1



Ingredients

- 1 teaspoon pesto
- 2 slices bread
- 40g cheese, such as cheddar or mozzarella, grated or sliced
- 1 medium tomato, thinly sliced
- freshly ground black pepper
- 1 tablespoon olive oil
- salad, to serve

Method

1. Spread the pesto over the bread, then top one slice with the cheese and tomato. Grind over some black pepper and sandwich the two pieces of bread together.
2. Heat the oil in a large non-stick frying pan and lower the sandwich into the pan with a spatula. Cook over a low-medium heat for 3 minutes or until the underside of the bread is golden brown and the cheese has begun to melt. Flip the toastie over and cook for 2–3 minutes more or until both sides are golden and the cheese has fully melted.
3. Remove from the pan, slice in half and serve hot, with salad.



Answers to December crossword



Answers to Kids Quiz

1. A donkey
2. Poppy
3. Broth
4. Autumn (called the Fall in the USA)
5. One extra day
6. Asia
7. Buckingham Palace
8. Archery
9. Italy
10. 26



Website of the Month

Your editors present a quirky, interesting, surprising or who-knows-what website that may be of interest. Hand-curated by your intrepid cybernaut navigators Chris and Stephen 😊

<https://notalwaysright.com>

You've heard the phrase "The customer is always right" ... err ... well not here ... and definitely not in the USA!



Oven temperature conversions

Centigrade	Farenheit	Gas Mark
140°C	275°F	1
150°C	300°F	2
160°C	325°F	3
180°C	350°F	4
190°C	375°F	5
200°C	400°F	6
220°C	425°F	7
230°C	450°F	8
240°C	475°F	9

Mobile Library dates & times

Dates	Location	Stop name	Arrives	Leaves
2026	Ulting	Doe's Corner	9:40	9:55
14th January	Ulting	Ulting Lane/Water Co. Houses	10:00	10:15
4th February	Heybridge	Colne House	10:45	11:15
25th February	Heybridge	Coopers Avenue	11:20	11:50
18th March	Heybridge Basin	Bus Stop	12:00	12:15
8th April	Heybridge Basin	Daisy Meadows car park	12:20	12:50
29th April	Goldhanger	Village Hall	13:10	13:40
20th May	Heybridge	Plantation Hall	14:45	15:15
10th June	Langford	Little Hills	15:30	16:00
1st July				
22nd July				
12th August				

What goes where?



Essex Police Contacts

Call 999 (emergency) if:

- A crime is in progress
- Person suspected of a crime nearby
- There is a danger to life
- Violence is being used or threatened

Call 101 for any non-emergency contact with the Police. This number covers all of England and Wales but you get the option to speak to Essex Police. Alternatively you can report a crime and more at <https://www.essex.police.uk/do-it-online/>

The Goldhanger Neighbourhood Watch email system is free & confidential. It sends emails with information & advice on current issues in the village. Contact goldhangernw@outlook.com for more information.

**Our collection day is Tuesday;
Landfill and Recycling on alternate weeks.**

**Last post collection times:
9am Monday to Friday 7am Saturday**

Crimestoppers

0800 555 111

You can contact them anonymously with information about crime

BUS TIMETABLE

Monday to Friday

Tollesbury ▶ Goldhanger ▶ Heybridge ▶ Maldon

95

95A

Mondays to Fridays excluding bank holidays

Route	95A	95	95	95	95	95
Code	Sch	NSch				
Tollesbury, The Square	0730	0732	0932	1142	1432	1612
Tolleshunt D'Arcy, The Red Lion	0735	0737	0937	1147	1437	1617
Goldhanger, Rectory Corner	0741	0743	0943	1153	1443	1623
Heybridge, Osea Road	0747	0749	0949	1159	1449	1629
Heybridge, Heybridge Basin	0754					
Heybridge, Bentalls Shopping Centre	0759	0755	0955	1205	1455	1635
Maldon, Tesco Store		0758	0958	1208	1458	1638
Maldon Town Centre, The Swan Hotel		0801	1001		1501	
Maldon, Blackwater Leisure Centre		0805	1005		1505	
Maldon, Morrisons Wycke Hill		0810	1010		1510	
Maldon Town Centre, The White Horse	0808			1211		1641
Maldon, Upper Plume School	0810					
Maldon, Lower Plume School	0815					

Maldon ▶ Heybridge ▶ Goldhanger ▶ Tollesbury

95

95A

Mondays to Fridays excluding bank holidays

Route	95	95	95	95A	95	95
Code				Sch	NSch	
Maldon, Upper Plume School				1520		
Maldon, Lower Plume School				1525		
Maldon, Morrisons Wycke Hill		1016			1525	
Maldon, Blackwater Leisure Centre		1020			1529	
Maldon Town Centre, The Swan Hotel	0825	1025	1225	1528	1534	1655
Maldon, Tesco Store	0829	1029	1229	1532	1538	1659
Heybridge, Bentalls Shopping Centre	0832	1032	1232	1535	1541	1703
Heybridge, Heybridge Basin				1542		
Heybridge, Osea Road	0837	1037	1237	1546	1546	1708
Goldhanger, Rectory Corner	0841	1043	1243	1553	1553	1715
Tolleshunt D'Arcy, The Red Lion	0847	1048	1248	1558	1558	1720
Tollesbury, The Square	0852	1054	1254	1605	1604	1726

Codes

Sch Runs on school days only
NSch Runs when schools are closed

BUS TIMETABLE

Saturday

Tollesbury ▶ Goldhanger ▶ Heybridge ▶ Maldon

95

Saturdays

Tollesbury, The Square	0942	1142	1432
Tolleshunt D'Arcy, The Red Lion	0947	1147	1437
Goldhanger, Rectory Corner	0953	1153	1443
Heybridge, Osea Road	0959	1159	1449
Heybridge, Heybridge Basin			
Heybridge, Bentalls Shopping Centre	1005	1205	1455
Maldon, Tesco Store	1008	1208	1458
Maldon Town Centre, The White Horse	1011	1211	1501

Maldon ▶ Heybridge ▶ Goldhanger ▶ Tollesbury

95

Saturdays

Maldon Town Centre, The Swan Hotel	1025	1225	1425	1625
Maldon, Tesco Store	1029	1229	1429	1629
Heybridge, Bentalls Shopping Centre	1032	1232	1432	1632
Heybridge, Heybridge Basin				
Heybridge, Osea Road	1037	1237	1437	1637
Goldhanger, Rectory Corner	1043	1243	1443	1643
Tolleshunt D'Arcy, The Red Lion	1048	1248	1448	1648
Tollesbury, The Square	1053	1253	1453	1653

The Blackwater Link - 90

Runs from Morrisons in Maldon to Witham Ebenezer Close (passes Witham Station)

Take the 95 to Bentalls and pick up the 90 there.

For more details contact 01702-541511

Hedingham Omnibuses:

01206 769778
www.hedingham.co.uk

Stephenson's Buses:

For the Blackwater Link - 90
01702 541511 (0900-1730)
www.stephensonsofsex.com

HEALTH

Blackwater Medical Centre	876760
Longfield Medical Centre	876433
Tollesbury Surgery	869204
St Peter's Hospital <i>NHS</i> (Maldon - no A&E)	725323
Broomfield Hospital <i>NHS</i> (Chelmsford, has A&E)	01245 362000
Colchester General Hospital <i>NHS</i> (has A&E)	01206 747474
NHS Advice (non-emergency)	111

I got a box of mince pies and a Rolls-Royce - what did you get?



LOCAL PUBLIC SERVICES

Maldon District Council	854477
Job Centre Chelmsford	0845 606 0234
Local Police (non-emergency)	101 (<i>puts you through to Essex Police</i>)

HELP & ADVICE

Maldon Citizens Advice Bureau	841195
Social Services	08457 430 430
Victim Support (charity for victims of crime)	08 08 16 89 111
Women's Aid	01245 493114
Alcoholics Anonymous	01904 644026
Childline	0800 1111
Universal Credit Helpline	0800 328 5644
Salvation Army	853942
Gingerbread (Charity for single parents)	01245 352708
Outhouse East (LGBT Charity)	01206 871394 (<i>7pm-10pm weekdays</i>)
National Domestic Abuse/Violence Helpline	0808 2000 247 (<i>open 24 hrs, every day</i>)

ELECTRICITY & WATER

UK Power Networks	0800 783 8838
Anglian Water (Sewage flooding)	03457 145 145
Essex & Suffolk Water	0345 782 0999

TRAVEL

National Rail Enquiries	0845 748 4950
Hedingham Omnibuses Ltd	01206 769778 or 564581
Regal Busways	01245 249001
First Eastern National Buses	0845 678 2977
Bus Station Chelmsford	01245 263859
Bus Station Colchester	01206 572478
Stansted Airport	0844 335 1803

SPORTS CENTRES

Blackwater Leisure Centre	851898
Witham Leisure Centre	0845 260 1535