

# The Fish Street Allotments

items found recently



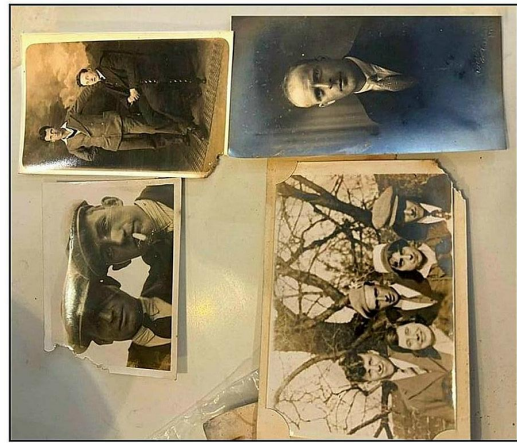
photo of the site probably in the 1980s



bottle by G&F May of Saltcote Maltings



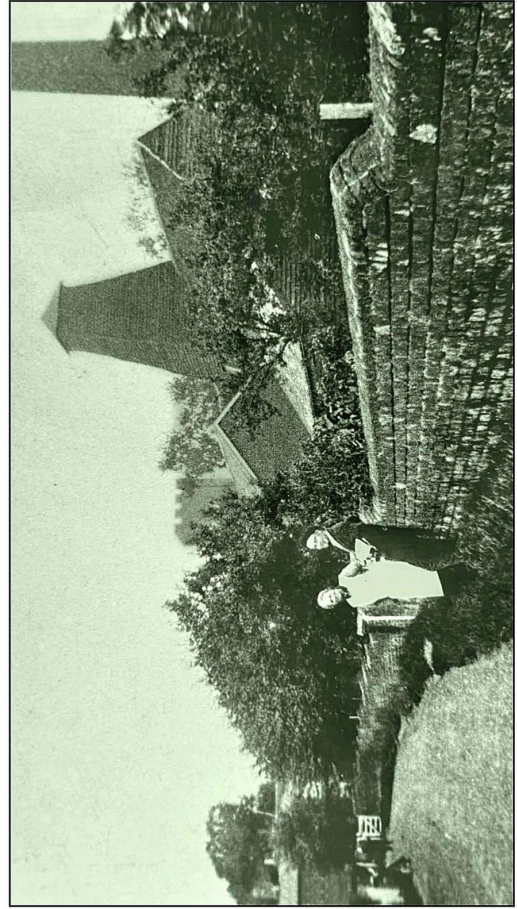
WW-2 Anderson style air-aid shelter



photos the Johnson family



bottle by Markhams of Maldon



members of the family by the allotments wall in the 1930s

# 131 Years of Goldhanger Parish Magazine

There has been a Parish Magazine since 1895 when the Revd. Frederick Gardner started it shortly after being appointed Rector at Goldhanger and there have only been a few breaks in publication, most notably during both World Wars.

## Deadlines:

**Submit articles, as PDF to preserve layout or as plain text in an email with any images attached, by midnight on the 15th of June. Please contact the editors if you have any questions about your article.**

**Submit advertising (including For Sale and Wanted) by midnight on the 13th of June please.**

**Magazine Editors:** Stephen & Chris      parishmag@goldhanger.org.uk

**Advertising** (for  
Magazine & Website)      Mel      advertising@goldhanger.org.uk

**For Sale or Wanted** - To list your items in the magazine the minimum donation is £1 per advert. If you would like to donate more it would always be welcome.

**Please note:** We cannot guarantee the delivery date of your magazine. Please bear this in mind when advertising functions at the beginning of the month.

**Donations:** Cheques made payable to **Goldhanger Parish Magazine**. You can also donate online through the Goldhanger website. If you would like to pay by BACS please contact the editors.

You can **download the Parish Magazine** in glorious technicolour each month, including back issues, at: <https://www.goldhanger.org.uk/parish-mag.html> - and the links work in the PDFs.

## Tide Times

<https://www.goldhanger.org.uk/index.html>

<https://www.tidetimes.co.uk/maldon-tide-times>





## From the Editors

**H**ats off to Carol Bonard for completing the London Marathon despite some big setbacks in training. What a feat! Read about her experience on page 11.



Look out for these things to do this month:

**Music on the field on 7th June.**

**Bingo on the 13th June.**

**Film club on the 17th June.**

**Sixties revival evening on the 27th June.**

**Prepping for Gala Weekend in September.**

I knew a guy who collected candy canes, they were all in mint condition



## Memorial Stonemasons

**Established in Danbury 1878**

Bespoke hand-carved designs  
Personal inscriptions  
Restoration and cleaning

Contact us to discuss your requirements  
and a free no obligation quotation

**01621 502 262**

**agsmithfunerals.co.uk**

**enq@agsmithfunerals.co.uk**

**N.A.M.M.**  
Register of Qualified Memorial Fixers

**BRAMM**  
British Register of Accredited  
Memorial Masons

**Bespoke memorials in association with AG Smith Funeral Directors**

# The Fish Street Allotments

Having been unused and overgrown for over 20 years the Fish St. Allotments site was recently purchased by two local families and the site has been cleared. During the clear-up various items of historical interest were found. Some were in one of the derelict sheds and some were in the undergrowth. A few of the items found are shown on the front cover and two more are shown below.

The Allotments were owned by the Johnson family who lived in the Beehive Cottages opposite and used the allotments during most of the 1900s.



*pocket watch with  
"Railway Timekeeper"  
on the dial*



*brass name tags  
one with "NFS" which is  
"National Fire Service"*

A search of the archives for information about the site revealed that the *1830s Tithe Map & Awards* identifies the land as the "Lucerne Piece". Lucerne is an old name for an animal fodder crop more commonly known now as Alfalfa and still is grown throughout the UK. The word Lucerne was often combined with "Piece" as a term for a small plot of land.



*1830s Tithe map*

LANDOWNERS.	OCCUPIERS.	Numbers referring to the Plan.	NAME AND DESCRIPTION OF LANDS AND PREMISES.
<i>Croape Henry Esqr</i>	<i>Wade William</i>	<i>168</i>	<i>Lucerne Piece</i>

*extract from the 1830s Tithe Awards for plot-168*

for more about these Allotments search for: *goldhanger past fish st allotments*

[www.churchside1.plus.com/Goldhanger-past](http://www.churchside1.plus.com/Goldhanger-past)

*David Newman*

# A.G. Smith

Est. 1912

## Funeral Directors & Monumental Masons

- 24-hour caring, supportive, professional
- Private chapel of rest
- Religious and non-religious funerals
- Green & woodland funerals
- Mercedes Benz hearse & limousines
- Hand crafted memorials
- Funeral plans to give you peace of mind - Golden Charter Funeral Plan Introducer

**Maldon: 01621 854 293**

7 Spital Road, Maldon, CM9 6DY

**Southminster: 01621 774 557**

44 Station Road, Southminster, CM0 7EW

**enq@agsmithfunerals.co.uk**



Serving our local community since 1912 | [www.agsmithfunerals.co.uk](http://www.agsmithfunerals.co.uk)



## Bakers of Danbury Ltd

*High quality craftsmanship*

CONSERVATION | RESTORATION | NEW BUILD

Our project management team and in-house expert tradesmen have long been associated with the many fine historic, churches and listed buildings within the Essex area:

As building contractors we offer:

- Repair and restoration to historical & listed buildings
- Contemporary domestic and commercial conversions
- Luxury new build extensions
- Traditional timber windows and doors
- Bespoke joinery and furniture
- Polite tradesmen and minimal disruption

**T: 01245 225876**

**W: [www.bakersofdanbury.co.uk](http://www.bakersofdanbury.co.uk)**

**E: [info@bakersofdanbury.co.uk](mailto:info@bakersofdanbury.co.uk)**



*Established over 145 yrs*

# Goldhanger Village Hall



A modern venue for birthday parties, discos, children's parties, quiz nights & theme nights.

Comfortably seats 80 people using our chairs and tables - you are welcome to bring your own enabling you to seat more.

See [Village Hall Calendar](#) for more details of events.



**Pink recycling bags** are available 15 minutes before each Parish Council meeting every 2nd Wednesday of the month from 7.15pm. Purple bags are no longer available.

**Gentle Yoga** every Monday 7-8pm

*Nikki Myers 07963 785718, [youtimeyoga@live.co.uk](mailto:youtimeyoga@live.co.uk)*

**Chair Yoga** every Wednesday 11am

*Nikki Myers 07963 785718, [youtimeyoga@live.co.uk](mailto:youtimeyoga@live.co.uk)*

**Parish Council** second Wednesday of the month 7:30-9:30pm

**Karate** every Thursday 6-8pm

**Art Club** second Thursday of the month 2-4pm

*Catherine 01621 788488*

**Film Club** third Wednesday of the month (*except July and August*), doors open 7pm, film 7:30pm see *advert for details*

**Carpet Bowls** alternate Fridays from Friday 11th September to April 2027. 1.45pm to 4.00 pm

## Village Hall Bookings

Contact Jackie Christy on 788432 or:  
<http://www.goldhangervillagehall.co.uk/bookings/#form>

Web: [www.goldhangervillagehall.co.uk](http://www.goldhangervillagehall.co.uk)

Facebook: [Goldhanger Village Hall](#)

X: [@Goldhanger\\_VH](#)

Hire charges		Goldhanger Resident Rate (per hour)	General Rate (per hour)
Monday-Friday	9.00 -18.00	£12	£14
	18.00 - 23.00	£17	£20
Saturday-Sunday	9.00 - 18.00	£17	£20
	18.00 - 23.00	£22	£27

# Community Page

## **Bellringing** [www.bellringing.org/learntoring/](http://www.bellringing.org/learntoring/)

Every Wednesday 7:30pm - 9:30pm and for services on Sundays. Newcomers welcome. Contact Sarah Scannell 07789 990942 or email [goldhangerbells@outlook.com](mailto:goldhangerbells@outlook.com).



## **Coffee mornings**

Community Room at St. Peter's Church on Tuesdays between 11am and 12noon. Everyone is welcome. Pop along, bring your friends, and have a chat over coffee.



## **Shanties in the Pub**

Billiards room at the Chequers every other Tuesday (from 12th October) from 7pm. Just join in the responses or take a lead as you wish. Ooo-Aaaar!



## **AVAGO**

Open evening at the Chequers. Monthly. Billiards room from 4pm. Dates will be published in the magazine monthly.



## **Goldhanger Sailing Club** [www.goldhangersailingclub.org.uk](http://www.goldhangersailingclub.org.uk)

All types of sailing, including sailboarding and canoeing, with racing organised on Sundays during the season, there is something for everyone who loves the water.



## **Mother's Union**

4th Friday of each month at 1.45pm at Honywood Hall, Hall Road, Great Totham.



## **Goldhanger Book Club** (*St. Peter's Community Room*)

Bring a book suggestion and share with others over a free glass of vino or tea and cake. Only £5. May 25th 7:30pm.



## **Maldon District Council Monthly Surgeries**

1st Saturday of the month. Queens Head Tolleshunt D'Arcy. 12 noon to 1pm.



## **The Goldhanger Gallopers**

All abilities running club. Wednesday evenings at St. Peter's Church Community Room at 7:20pm.



# Goldhanger Church Services

**Sunday 7th - 9.30am** Holy Communion with Rev Andrew

**Sunday 14th - 10am** lay led family service

**Sunday 21st - 9.30am** Holy Communion with Rev Michael Hatchett

**Sunday 28th 9.30am - Petertide - Rev Sue**

## Weekday Holy Communion Services

Weekday Holy Communion service from The Book of Common Prayer

Every Wednesday at St Nicholas, Tolleshunt D'Arcy at 10.00am

And every Saturday at All Saints, Little Totham at 5.30pm

Please get in touch with Rosie Pollock or the churchwardens if you are considering baptism for yourself or your children, confirmation, and weddings Please contact Rev'd Andrew or Rosie for funeral arrangements.

## **Parish Prayers**

If you would like someone, an event or concern, included in church prayers please contact Kim Evans on 788698 email [kwestwood58@aol.com](mailto:kwestwood58@aol.com) or George Bunting (details on next page). Votive candles are lit at Sunday Services.

## **Raise free donations for Goldhanger church through Easyfundraising**

Go to <https://www.easyfundraising.org.uk/causes/stpeterschurchgoldhanger> and join for free.

## **St. Peter's Church Book of Remembrance**

If there is someone special you would like to be included, please send an email with details to [Beckywillisbecky@btinternet.com](mailto:Beckywillisbecky@btinternet.com). There is no charge, but a donation to the upkeep of our beautiful church is always very much appreciated.

Thank you for your support. Please contact Rosie Pollock, for any queries or help.

Bad at golf? Join the club.

# St. Peter's Church Goldhanger

**Priest in Charge of  
the Blackwater  
Benefice\***

**Vacancy**

**Associate Priest**

Reverend Andrew  
Vince (Assistant  
Agricultural Chaplain)

07952 144613  
[andrew.vince15@gmail.com](mailto:andrew.vince15@gmail.com)

**Church Wardens:**

Mr George Bunting

01621 929690  
[gvbunting@gmail.com](mailto:gvbunting@gmail.com)

Mrs B Abrey

01206 384394

**Safeguarding Officer**

**Vacancy**

**Benefice  
Administrator**

Rosie Pollock  
(For weddings,  
baptisms etc). Available  
on Tuesday and Friday  
mornings

07908 776750  
[office.blackwaterbenefice@gmail.com](mailto:office.blackwaterbenefice@gmail.com)

**Church flowers**

Mrs Elaine Clark

788686  
[elaclark@me.com](mailto:elaclark@me.com)

\* Goldhanger, Little Totham & Great Totham and Tollesbury, Salcott, Tolleshunt D'Arcy and Tolleshunt Major

St. Peter's Goldhanger website: [www.st-peters-church.goldhanger.org.uk](http://www.st-peters-church.goldhanger.org.uk)

## Flags for June

**Saturday 13<sup>th</sup> June**



**King's official Birthday**

**Sunday 21<sup>st</sup> June**



**Prince William's Birthday**

**Saturday 27<sup>th</sup> June**



**Armed Forces Day**

**Monday 29<sup>th</sup> June**



**St Peters Day**

— FAST FIX —  
**BOILERS**  
— & TANKS —

**FAST  
RELIABLE  
GOOD VALUE  
LOCAL**

**SPECIALISTS IN OIL FIRED  
BOILERS & TANKS**



**01621 862526**

[www.fastfixboilersandtanks.co.uk](http://www.fastfixboilersandtanks.co.uk)

**CONTACT US TODAY FOR YOUR FREE TANK SURVEY**



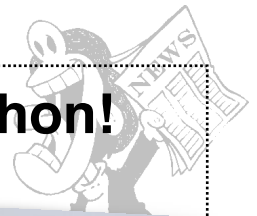
CALL US TODAY FOR A QUOTE

**01621 868868**

[www.blackwaterfuels.co.uk](http://www.blackwaterfuels.co.uk)

**WE GO THE EXTRA MILE** →

Cutter House  
Woodrolfe Road  
Tollesbury  
Essex  
CM9 8SE



# Carol Bonard completes the London Marathon!

You might remember that last year I had to pull out of The 2025 London Marathon due to a Detached Retina and emergency surgery but was able to defer my place to 2026. So when I was allowed I started training again, Unfortunately during the following months I suffered a couple of nasty falls as well as a few other set-backs.

By January this year and without the training I felt I needed, I decided The London Marathon would be beyond me. However with less than 2 months to go before the marathon I began to think, "What have I got to lose? I might as well

carry on training, get to the start line, enjoy the London

Marathon experience and see what happens". As I still wasn't sure if I would be doing the marathon, I hadn't agreed to raise funds for a charity this time. Suki was the only person who knew that I had decided to give it a go.

In spite of never running any further than 16 miles (a marathon is 26.2 miles), on the 26th April 2026 I not only started the Marathon but I finished it as well!!

It was one of the most incredible experiences of my life and I'm so pleased that I decided to go for it.

To celebrate my (very unexpected) achievement I have opened a **Just Giving** page to raise funds for **Farleigh Hospice**. If you go to Just Giving and put in Carol Bonard you should be able to find it. Your donations would be much appreciated.

Thank you x





# PC Doctor Operations Limited

**For all your computer requirements including:**

- Virus prevention, detection & removal
- Broadband, Networking, Wireless & Firewall set up
- Email & SPAM filtering
- Hardware Repairs & Upgrades
- Software Faults & Crashes
- Backup Solutions & Data Recovery
- Software Installation & Removal
- Hardware & Software Supplied
- Website Management • Computer Training



**Office: 01621 891064 • Mobile: 07990 565336**

**Email: [support@pcdocops.co.uk](mailto:support@pcdocops.co.uk)**

**Website: [www.pcdocops.co.uk](http://www.pcdocops.co.uk)**

Monthly subscription service available to provide complete "peace of mind" and allow you to spread the cost of your IT requirements. Please contact for further information.

## Allotments.

If you would like an allotment please phone or e-mail

Clive Cheeseman

[cheeseman3@sky.com](mailto:cheeseman3@sky.com)

01621 788433



[chelmsfordplumbingandheating.co.uk](http://chelmsfordplumbingandheating.co.uk) | [sales@chelmsfordplumbingandheating.co.uk](mailto:sales@chelmsfordplumbingandheating.co.uk)



# CHELMSFORD PLUMBING & HEATING

## 01245 478588

**A trustworthy family run business specialising in Gas,  
Oil, LPG, Electrical & Plumbing services**

- ✓ All calls are answered personally
- ✓ Confirmed bookings given
- ✓ No job too small!

### Boiler Installs, Servicing & Repairs

### New Heating Systems

### Plumbing Repairs

### Electrical Services



# BERGMAN DECORATIONS

## INTERIOR AND EXTERIOR DECORATING

Premium decorating services  
by a local, trusted professional.



INTERIOR & EXTERIOR  
DECORATING



WALLPAPER  
HANGING



WOODWORK  
PAINTING



DOMESTIC & PERIOD  
PROPERTY SPECIALIST



Find us on  
Google

Check out our 5 star  
reviews on Google



OFFICE  
01621 333 789



MOBILE  
07985 753 778



Bergman Decorations



Bergman Decs



Bergman Decorations

[www.bergmandecorations.co.uk](http://www.bergmandecorations.co.uk)

LOCAL | RELIABLE | TRUSTED  
QUALITY WORKMANSHIP | ATTENTION TO DETAIL | PRIDE IN EVERY PROJECT

**MUSIC ON THE FIELD**  
**WITH Carol & Suki**  
**and**  
**The Goldhanger Shanty Crew**  
**Ella Moon**  
**VAL Trio**

**Sunday 7th June 13.00 - 15.00**  
**on the Village Hall Field, Head Street, Goldhanger CM9 8AY**  
**(weather permitting)**

- ▶ **Bring your chairs and maybe a picnic**
- ▶ **Enjoy a chilled-out afternoon of music**
- ▶ **There will be a collection bucket in aid of The Village Hall Fund.**

---

# BAKERS JOINERY

---

Traditional Joiners and Carpenters

Timber Windows and Doors

Hand Built Cabinetry

Village Signs

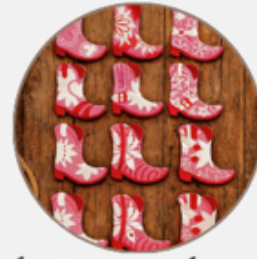
Bespoke Joinery Projects

[info@bakersjoinery.co.uk](mailto:info@bakersjoinery.co.uk)

[www.bakersjoinery.co.uk](http://www.bakersjoinery.co.uk)

Eves Corner, Danbury, Essex, CM3 4QB

**Tel: 01245 976974**



Adult Line dancing  
classes  
Suitable for beginners  
Tuesday 7- 8pm  
GoldHanger Village  
Hall  
(CM9 8AY)  
See you there!!!

## AVAGO

Open evening at the Chequers

Have you ever wanted to:  
Sing a song?  
Play your musical instrument?  
Read some poetry or prose?  
Do a little stand-up routine?

Well, now's your chance to **AVAGO**.

The next event will be in the billiard room of the Chequers on **Sunday 28th of June 2026** from 4pm.

Supportive audience also required.



## SPEEDWATCH GROUP

We need your help.  
It only takes 2 hours  
each week and  
availability during  
daylight hours.

Full training is given  
and whilst it's a  
serious topic, we  
are a friendly and  
Happy group

To help us try to prevent an  
accident in our village streets –  
please email [greg.lake@icore-  
ltd.com](mailto:greg.lake@icore-ltd.com)



## **GOLDHANGER PARISH COUNCIL**

Notes of the Parish meeting held on the 13<sup>th</sup> May 2026.

Full minutes can be viewed on the website or village noticeboard once they have been approved at the next Parish Council Meeting.

[www.parish-council.goldhanger.org.uk](http://www.parish-council.goldhanger.org.uk)

[clerk.gpc@outlook.com](mailto:clerk.gpc@outlook.com)

### **Council**

Cllr J Bourn was appointed as Chair for 2026/2027

Cllr H Reynolds was appointed as Vice Chair for 2026/2027

Cllr M Sargeant - Finance Representative

Cllr C Cheeseman – Allotments Representative

### **Playing Field**

A resident had planted some bulbs around the village sign, in addition to the flower beds behind the bus stop

The closer Arm bolt on the phone box had fallen off and Cllr Sargeant had repaired this

The defibrillator box needed attention and Cllr Cheeseman offered to put some hammerite on it

The MP'S annual report had been received recently

Meeting Dates were agreed for 2026/27 as the 2<sup>nd</sup> Wednesday in the month except for June when it will be 24<sup>th</sup> June 2026 when accounts will be presented for signing off and dates issued for publication to the public

Insurance renewal for 2026/27 was agreed

Data Protection and IT Policy was being progressed

### **Allotments**

An enquiry had been made regarding an allotment and had now been taken. Allotment terms and conditions had been drafted as well as an information brochure.

### **Playing Field and Play area**

Signs were being sought regarding 'no dogs permitted in childrens play area' A resident had mentioned about overhanging branches from an Oak Tree located in the park area into their garden. The garden had no objection to this being cut

### **Parking Issues**

Concerned residents had noted various untaxed and uninsured cars on the Hall Estate which now seemed to have moved

### **Speed watch Group**

The Monthly report had been received which stated that there had been 75 vehicles had been recorded doing over 35mph in a 30mph limit between Apr 2<sup>nd</sup> and May 7<sup>th</sup> . This was mainly in Maldon Road.

A new recruit was just undergoing training to join the team

In other areas CSW teams are having to wear body cams for their own safety. In Goldhanger the level of abuse is rising a little with hand gestures or shouting being the main things. The role of the Team is to act as a visible encouragement to not speed in our area from a safety perspective. They are not there to get them speeding points or fines

### **Bus Shelter**

The replacement of the missing/damaged bus stop shingles had been completed by Cllr Ellis, however on the 29<sup>th</sup> April a bus had caused further damage, breaking a batton and dislodging the recently replaced shingle. A letter will now be sent to the bus company regarding this

### **Assertion 10 Compliance – Section 1 of the AGAR**

A draft website had been completed to apply with above and would go live asap. New emails addresses for both the clerk and councillors have been set up and will be available as soon as possible.

**Note: Next Meeting will be on the 24<sup>th</sup> of June, not the 2<sup>nd</sup> Wednesday.**



# Delivering complete wastewater solutions

***Installs | Homebuyer/seller surveys  
Servicing | Repairs | Emptying***

[owlshall.co.uk](http://owlshall.co.uk)

Service Department:  
01371 504048  
[service@owlshall.co.uk](mailto:service@owlshall.co.uk)

Installations Department:  
01371 850698  
[sales@owlshall.co.uk](mailto:sales@owlshall.co.uk)

Visit our  
online store:  
[owlshall.co.uk/shop](http://owlshall.co.uk/shop)  
or scan the QR code



## BARBERS GARDENS

A CUT ABOVE THE REST

### GARDENING SERVICES

Here to tidy up your garden!  
Even if it's just a trim, give us a call.  
07986011237

[barbersgardens@gmail.com](mailto:barbersgardens@gmail.com)

ANY QUESTIONS, PLEASE CONTACT  
US NOW.

# Monthly Ministry Letter for Parish Magazines

YOU may have seen on the news a little while ago a rather quirky item relating to a half-marathon run in Beijing in which there was a separate event for robots. One of them, a robot named Lightning triumphed over all other contestants in a time seven minutes faster than the current world record.

Just a piece of nonsense, you might think. But robotic science is an ever developing and important branch of science that is changing our lives.

I refer particularly to another news story a few weeks before the Beijing marathon in which it was reported that a particularly complex medical operation on a prostate cancer victim in Gibraltar was carried out by robotic surgery being managed by a doctor who was working 1,500 miles away in London.

How wonderful! And how much God would have been pleased to see that a skill which He made available to us was being put to such good use, especially when there are so many times that we muck up.

This all seems particularly relevant as the season of Trinity begins to develop in our Christian Calendar.

It's a season in which we see Jesus rolling up His sleeves, travelling round and about, teaching, preaching, curing the sick and performing the occasional miracle. In other words He is using His skillset as a demonstration of the power of God and of the love of God.

I don't suppose for one moment that there was any overt Christianity involved in the robotic operation. But can't we just feel that the hand of God was in there somewhere, just as it was in the miracles of Jesus. It's just that people don't like to admit it these days.

"God is love, and those who abide in love abide in God, and God abides in them," we read in the First Letter of John, chapter 4, verse 16.

Exactly. Apart from anything else, who among us can claim that they have never forgotten about God, or cast Him aside. Or behaved irrationally while knowing full well that we are not being good and righteous Christians.

Of course we fall from time to time. We are Christians, but we are also humans. We make mistakes. We get things wrong. We say things we never should.

But the love of God remains within. God recognises our faults, He understands, and He forgives, and He does so because He understands that even in the bad times our beliefs remain and our faith is undaunted.

Going back to that letter of John's, this time in chapter 1, verse 9: "If we confess our sins, he who is faithful and just will forgive us our sins and cleanse us from all unrighteousness."

Through all the Gospel stories about the way Jesus was working in this period of Trinity, this simple message remains the underlying theme. Just imagine what hope that gave to those mainly very ordinary people who came within His compass.

And that message continues for us. God has not deserted us. Even though His presence may not seem obvious sometimes, we usually only have to look with sensitivity at what is in front of us to see that God is present in our world in one way or another.

The shape of a passing cloud, a bird riding the airwaves, a summer flower in bloom.

And the performance of an operation over 1,500 miles which offers such hope not just to the patient who was treated on that occasion, but to all patients, particularly those living in isolated conditions, whose lives will benefit as the practice grows.

PHILIP SMITH

## Goldhanger Gala - 5th & 6th Sept 2026

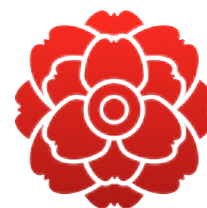
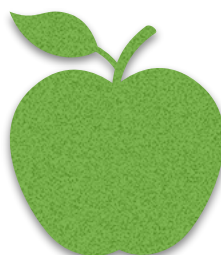
Not wishing the summer away before it's started but September will soon be upon us, so to give you a heads up on plans for our annual Gala included in this month's mag is the current programme (please bear in mind it's still in progress), and the list of categories for the competitions, a.k.a. Make, Bake & Grow Show! Giving you lots of time to start preparing your entries.

The village trail this year, instead of scarecrows, will be Flower Pots with the theme of 'Children's Stories' - think nursery rhymes, fairy tales, comics, cartoon strips etc. Decorate your pot and use flowering plants and decorations to bring your theme to life. We've chosen this theme as it's Winnie the Pooh's 100th birthday this year. Let's see what creations you can come up with! The intention, as last year, is for entries to be judged but displayed over the Gala weekend only, not the week leading up to it.

More details to follow over the next couple of months and also on the Goldhanger Village Group facebook page.

Get the dates in your diaries, it'll be a fun packed weekend.

Gala Committee






# GOLDHANGER GALA - 4TH/5TH/6TH SEPT 2026

## — PROGRAMME (DRAFT) —

### FRIDAY

18.00-19.00 KIDS DISCO - Village Hall

 Off-road parking  
Head St and Church St

### EVENTS ON ALL WEEKEND

TALENTS OF GOLDHANGER, BOOK SALE & REFRESHMENTS - Church

THEMED FLOWER POT TRAIL throughout village

CHEQUER'S BEER FESTIVAL

### SATURDAY

From 09.00 MAKE, BAKE & GROW SHOW - Village Hall

drop off entries from 9am, judging from 10am, display from 12pm

From 09.30 CLASSIC CAR DISPLAY Chequers car park, BIKE DISPLAY - Churchyard

TABLE TOP SALE - Head Street

From 10.00 MOLLY'S LOLLYS ICE CREAM VAN and SUGARSTRIPES SWEET STALL

10.00-11.30 FUN DOG SHOW, DEMOS & REFRESHMENTS **to be confirmed** - VH Field

From 11.00 CHEQUER'S BBQ

From 12.30 CHILDREN'S DANCE DEMO? **to be confirmed** - Churchyard

From 13.30 KARATE DEMONSTRATION - Churchyard

14.30-15.30 VILLAGE HISTORY TOUR - from the Village Hall (booking required)

15.00-16.30 CHILDREN'S 'MINI SPORTS DAY' - Playing Field, Fish St

From 15.45 LIVE MUSIC - The Chequers

PIZZA VAN (Circles & Squares) - The Square

### SUNDAY

From 10.00 CHURCH FAMILY SERVICE

From 10.45 TEDDY PARACHUTE JUMPS, BACON ROLLS & BUCKS FIZZ - Churchyard

From 11.30 KID'S CRAFTS - Churchyard **to be confirmed**

From 12.30 LINE DANCING DEMO with Shanties? - The Square **to be confirmed**

From 13.30 KID'S BIKE PROCESSION

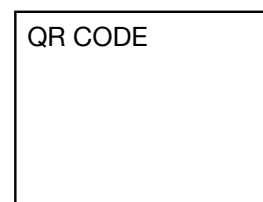
14.30-15.30 VILLAGE HISTORY TOUR from the Village Hall (booking required)

From 15.45 ADULT SPORTS - Village Hall Field?

From 17.00 LIVE MUSIC - The Chequers

FISH & CHIP VAN - The Square

QR CODE



**KINDLY SUPPORTED BY LEE MASTERS INSURANCE - 07799 846 236**

# Goldhanger Gala - Saturday 5th Sept 2026

## 'Make, Bake & Grow' Show Classes

### COOKING / HOME PRODUCE

1. Gala Cake: a novel bake decorated to celebrate your favourite book
2. Plain scones to a recipe x 6 (same size) recipe to be confirmed
3. Bottle of sloe gin or similar, e.g. turnip vodka, parsnip rum etc.
4. Jar of chutney

#### Children's Classes

5. 4-7 years - chocolate crispy cakes x 3
6. 8-12 years - Cupcakes x 3, any flavour

All entries must be made by the exhibitor

### FRUIT & VEGETABLES

7. Longest runner bean
8. A single tomato (with stalk)
9. A single courgette
10. A single chilli or pepper (with stalk)
11. Most amusing misshapen veg

Open to adults and children  
All fruit and veg must be home grown

Please ensure products that are fresh and clean

### FLOWERS

12. Flowering pot plant - max pot size 20cm/8" diameter
13. A colourful arrangement using flowers, foliage, fruit and/or veg  
- max height 45cm/18"

### PHOTOGRAPHY

14. This is Goldhanger - highlight our heritage and our vibrant community
15. Sunrise or sunset
16. Black and white

#### Children's Classes

17. 4-7 yrs old - any animal, fur, feather or fin
18. 8-12 yrs old - any animal, fur, feather or fin

All the photographs must be taken by the exhibitor

The size of the photo should be 8ins x 6ins and not mounted or framed

Maximum of one entry per person per class

Further details & entry forms will be available nearer the time

# Sixties Revival Evening

Saturday 27th June, 7pm

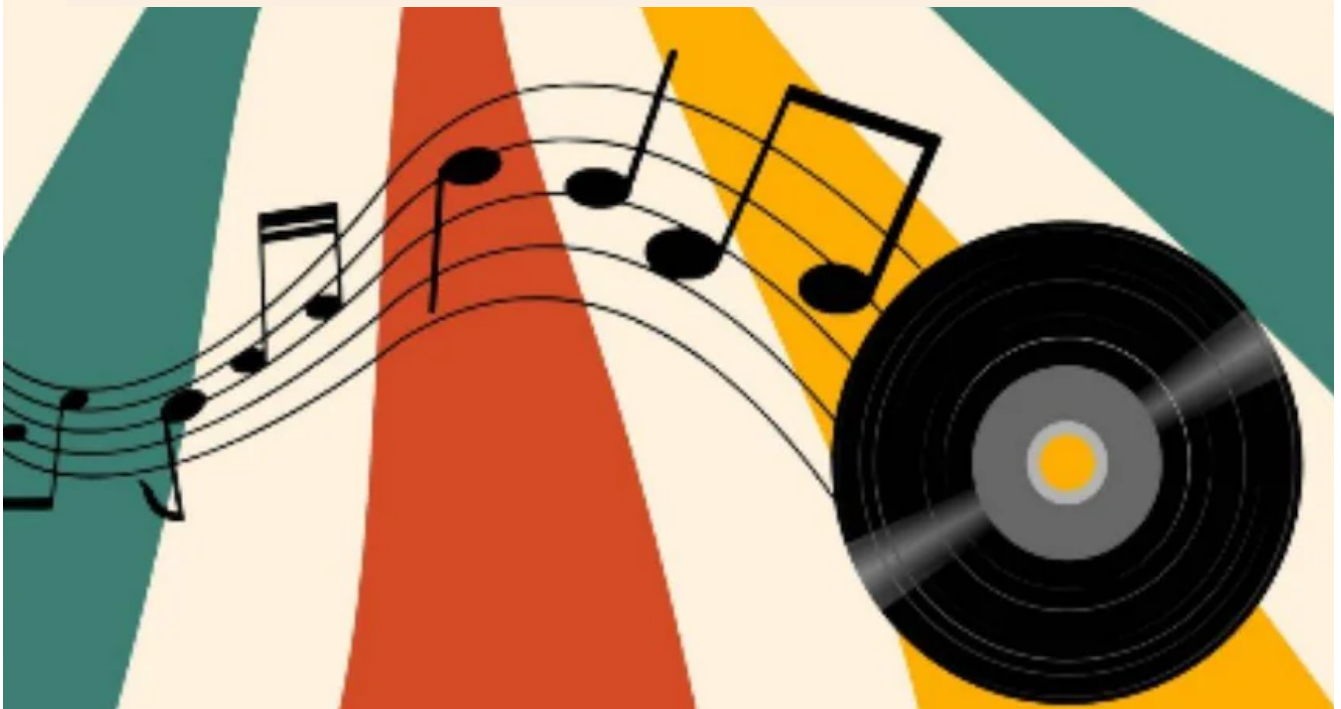
Goldhanger Village Hall

Bubbly reception followed by a  
two course buffet supper

Live music from **Mars Garden**

60's dress encouraged

BYO drinks, glasses & grooves!



**Tickets £35 pp** (booking deadline 13/6)  
Contact [jillcrooks66@icloud.com](mailto:jillcrooks66@icloud.com), 07734 069609

in aid of Goldhanger Village Hall

# A stellar line-up for the Essex Book Festival



Essex Libraries are delighted once again to play a central role in the Essex Book Festival 2026, welcoming an inspiring range of authors into library spaces across the county throughout June. The relaxed and welcoming atmosphere of libraries makes them ideal venues, particularly for those who may feel daunted by more traditional cultural spaces.

This year's exciting line-up includes:

- Ellie Levenson at Manningtree, introducing her debut novel *Room 706*
- Vaseem Khan, an Essex Library Service favourite, discussing his Malabar House series and Bond spin-off novels
- Sally Magnusson at Rayleigh with *The Shapeshifter's Daughter*
- Tim Marshall, answering questions on the updated edition of *Prisoners of Geography*
- Sophie Hannah, presenting the annual Dorothy L. Sayers Lecture at Witham
- Psychological thriller authors B.A. Paris (South Woodham Ferrers) and Sarah Vaughan (Chelmsford)

The Essex Book Festival began on the 28th of May and runs until the 28th of this month. Please check their website (link below) to get the details and dates of any events.

<https://libraries.essex.gov.uk/digital-content/essex-book-festival>





# Goldhanger Village Hall



## Film Club

### Wednesday 17th June

7pm for 7:30pm



H is for Hawk follows Helen (Claire Foy), who, after the sudden death of her father, loses herself in the memories of their time birding and exploring the natural world together and turns to the ancient art of falconry training a wild goshawk named Mabel to navigate her profound loss. But as she teaches Mabel to hunt and fly free, Helen discovers how deeply she has neglected her own emotions and life. What begins as an act of endurance transforms into an intimate journey of resilience and healing.

**£8 pay on the door (card or cash)**

Wine, soft drinks & ice creams available

Plenty of parking behind the hall / lifts available from the village if required, contact Jill 07734 069609 or Debbie 788709



Proceeds in support of the Village Hall, Head Street CM9 8AY



# The Chequers Inn



The Square, Goldhanger, Essex, CM9 8AS

Tel: 01621 788203

[www.thechequersgoldhanger.co.uk](http://www.thechequersgoldhanger.co.uk)

Great home cooked food. Several local suppliers used.  
Wonderful selection of cask ales, beers wines and spirits.

Great range of non-alcoholic drinks.

Pub games including bar billiards, darts and dominoes.

Dogs welcome.

Real fires and log burner.

Regular live music and events.

Great hospitality and friendly service.

Take away food, coffees, drinks & cakes available.

Dominic and the team look forward to welcoming you soon.

# Carpets and Vinyls Seagrass, Sisal & Coir

From Nic Lawrence  
Your Local Fitter

Choose at Home  
Re-fits also undertaken  
No Job Too Small  
Free Estimates  
Very Reliable 25 Years Experience  
01621 869344  
07771 632028

## Broadleaf Fencing



Call for a free estimate

01621 888621

07483 126957

For all your fencing needs [www.broadleaffencing.co.uk](http://www.broadleaffencing.co.uk)

- ✓ Experienced
- ✓ Competitively priced
- ✓ Highly rated



Supply and install fences & gates  
Bespoke pergolas & decking  
Fence & gate repairs  
Paving & patios

GOLDHANGER VILLAGE HALL COMMITTEE

Invites you to



Saturday 13th June

THE VILLAGE HALL

Doors Open 7.00 pm



Eyes Down 7.30 pm

A FUN FAMILY EVENING!



Bring your own drinks & nibbles  
Refreshments & cakes will be served  
in the interval



## Keeping the county warm



Fuel Services






Contact BFS for prompt delivery of your domestic heating oil direct from our local Danbury Fuel Services depot. You'll find no better service, no better value.

T 01245 425251 [www.bfsfuelservices.uk](http://www.bfsfuelservices.uk)

Christopher  
THE LOCKSMITH

### ARE YOUR LOCKS BEHAVING BADLY?

We Value Old Fashioned Customer Service  
A Local Trusted Family Business Since 1989

-  Specialist in UPVC & Wooden Doors
-  No Call Out Charge
-  No Fix No Fee
-  All Work Fully Guaranteed
-  10% Senior Citizen Discount



For More Advice & Help Call Christopher:

**07772 111 222**

[www.christopherthelocksmith.co.uk](http://www.christopherthelocksmith.co.uk)

If you would like a birthday or congratulations message (or any other message) included in the magazine then please let us know.

*(See inside front cover)*

Photos of village events are always very welcome.



**DOMESTIC APPLIANCE  
REPAIRS**

Prompt and Reliable Service

Washing Machines—Dishwashers  
Tumble Driers—Fridges & Freezers

NEW APPLIANCES SUPPLIED  
AT COMPETITIVE PRICES

Also Large Stock of New & Used  
Spare Parts

PLEASE RING ALAN TAYLOR

01621 779640

Mobile: 07885 483595

Family Run Business  
Est. 20 yrs

>>> **Could YOU be a Blood Runner?** <<<



↓ See our article ↓

[EssexVoluntaryBloodService.com](http://EssexVoluntaryBloodService.com)

**Word of the Month**

Adfenestrate: *verb*

To sneak through a window



**B P A Kennedy**  
**Plumbing and heating engineer**

Gas and oil boiler servicing/repair

New boilers

Central heating up grades/repair

New radiators

Desludging available

New bathrooms

Ball valves etc

**Telephone : 07786 954656 or 07879 643583**

# Megabrain Wordsearch 6 - Fruit

Difficulty level 2 (3 pts)

28 types of fruit are hidden in the grid below (NB the word 'berry' has been removed but always leaves a real word – e.g. straw berry but not ~~bit~~ berry.) There is NO LIST to help you! THEN, when you've found all 28, the 20 unused letters read as a clue to find a 29<sup>th</sup>. Email your answer to [pfrench2@hotmail.com](mailto:pfrench2@hotmail.com) to be immortalised in next month's magazine! Good luck!

Pete's tip: I've done the shortest one and one 'berry' example

T	T	A	R	A	P	P	L	E	N	R	B
N	I	E	N	G	P	P	E	O	E	A	L
A	U	M	G	O	N	R	S	P	N	E	A
R	R	I	N	T	M	M	I	A	A	P	C
R	F	L	I	A	A	E	N	C	R	R	K
U	D	C	N	D	G	A	L	H	O	N	G
C	A	A	O	E	A	O	T	E	E	T	O
K	E	V	L	C	U	T	L	R	L	M	O
C	R	A	E	D	O	A	E	R	K	A	S
A	B	U	M	N	G	N	L	Y	C	N	E
L	L	G	E	F	P	L	U	M	U	G	R
B	O	Y	S	E	N	U	I	T	H	O	T

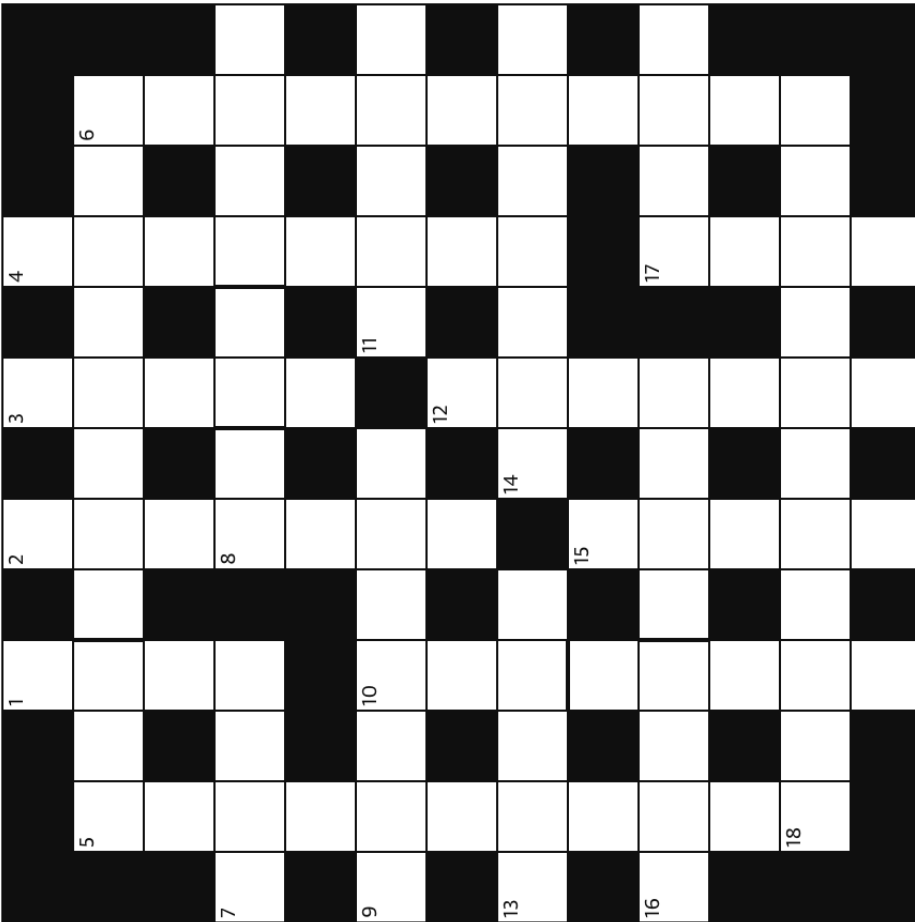
Note: Usual rules apply – diagonal, horizontal and vertical words forwards and backwards, letters can be used more than once and unused letters read as per a book to form the hidden question or clue.

## NB. The answer has 9 letters

Last month's 'Monarchs' clue was 'CGWYNN'S SON THE FIRST KING OF ENGLAND' Answer:  
AETHELSTAN / ATHELSTAN

The monarchs were (horiz.) Edward, Alfred, Charles, Egbert, Edmund, Cnut, George, Elizabeth, Richard (vert.) John, Henry, Eadwig, James, Stephen, William, (diagonal) Harold, Eadred, Aethelred, Edmund, Mary, Edgar

**Correct answers were received from Jill Crooks, Ruth Jolly, Janet Craske, Lorraine Alford, Carole Russell, Kevin Elmore, Mo Brooks, David Harding, Marion Everiss and Maureen Cheeseman MBE – well done to them 3 points earned**



**Across**

- 5 Trainee journalist (3,8)
- 7 Frenzied indulgence (4)
- 8 Containing all recent facts (2,2,4)
- 9 Studious - like a novel? (7)
- 11 Eccentric - like this ... ? (5)
- 13 Part-goat woodland spirit (5)
- 14 American marsupial (7)
- 16 Steam up (4,4)
- 17 Supporter (4)
- 18 Bird that sang in Berkeley Square (11)

**Down**

- 1 Do as requested (4)
- 2 Busy eds (anag) - French composer (7)
- 3 Term meaning 'polite' more usually prefixed with 'un' (5)
- 4 Devoted to learning (8)
- 5 Company - paunch (11)
- 6 A rail outlet (anag) - Provencal vegetable dish (11)
- 10 Age-based National Curriculum level (1-4) (3,5)
- 12 Frugal (7)
- 15 Lloyd Webber / Rice musical (5)
- 17 Ant or Peaty (4)

**Answers next month**

**Online games and puzzles to keep you amused**

Online games and puzzles: <https://www.games.co.uk/games/puzzle>

Online jigsaw puzzles: <https://www.jigsawplanet.com/>

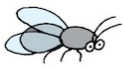
Online brainteasers, maths puzzles, word games, sudokus and memory games: <https://www.mindgames.com/>

# Children's Pages

## Kids Quiz

1. Egypt is in which large continent?
2. Name the world famous tennis tournament that takes place in England each Summer?
3. Two British coins have seven sides, can you name them?
4. How many sides does a hexagon have?
5. What sort of mythical animal is on the flag of Wales?
6. Which country in the world has most people living in it?
7. Alaska belongs to which country?
8. In which city could you walk across Tower Bridge?
9. Which sport takes place in a velodrome?
10. What sort of animals are known for building dams and live in lodges?

Answers on page 36

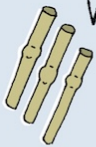


## How to Make an insect hotel



### the express way!

#### What you need:



- hollow plant stems, like bamboo canes



- twigs and sticks



- string

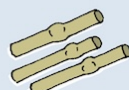
- 1 Collect handfuls of stems, twigs and sticks.
- 2 Tie the bundles quite tightly in two places.
- 3 Post into a hedge / bush or hang in a sheltered place.

### the deluxe way!

#### What you need:



- Small logs or untreated timber



- hollow plant stems, like bamboo canes



- twigs and sticks

#### An adult to help with tools:



- woodsaw



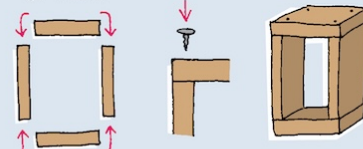
- nails and hammer or screwdriver and wood screws



- drill and 5mm wood bit



- 1 Make a wooden frame, fixing the wood with screws or nails.



- 2 Fill the frame with stems, twigs and sticks.
- 3 Fix a wire loop to the back of the frame and hang somewhere sheltered.

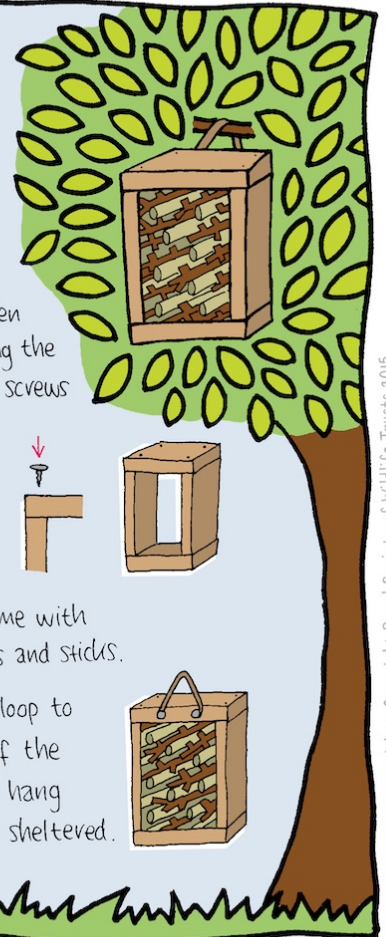
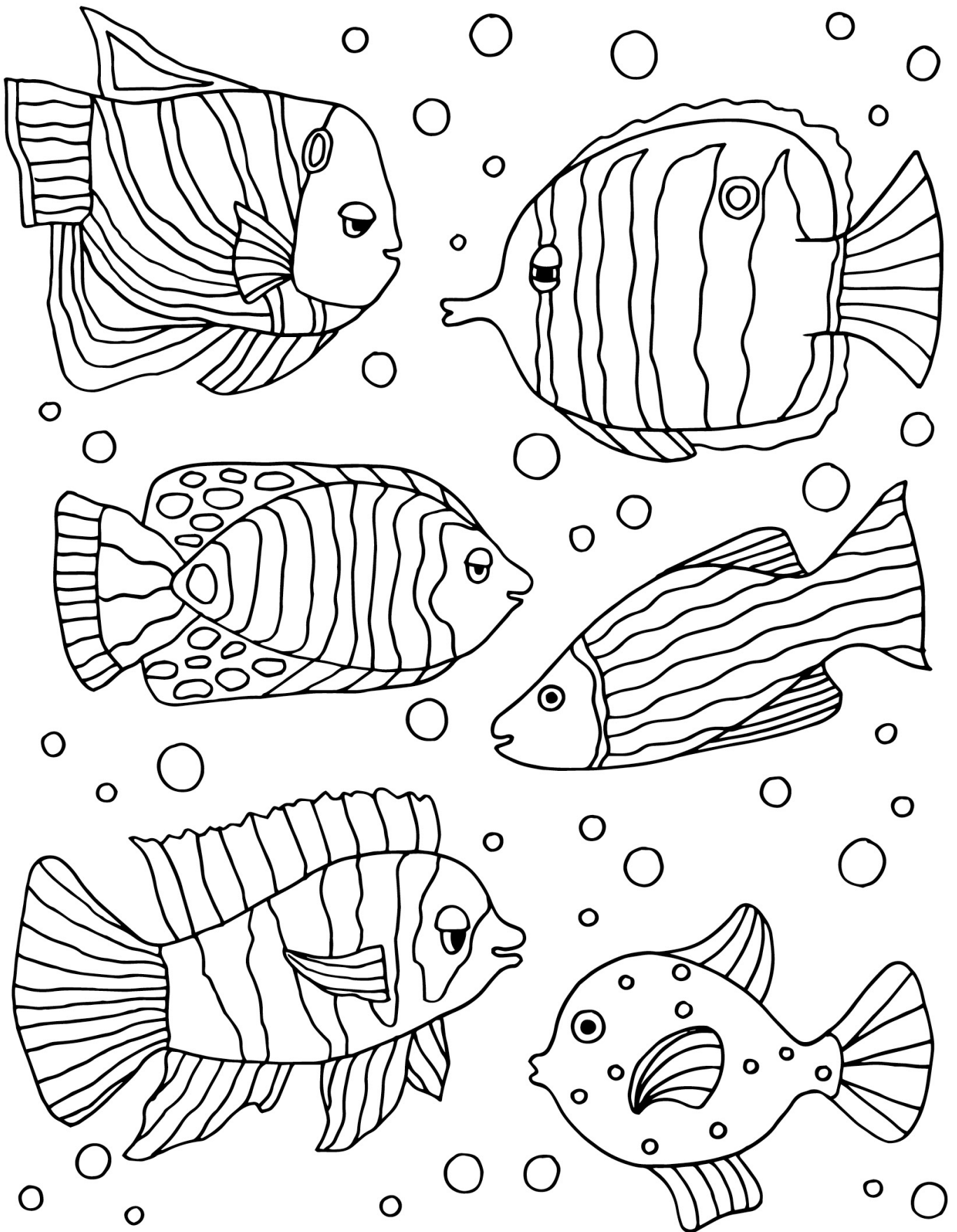


Illustration: Corinne Welch © Copyright Royal Society of Wildlife Trusts 2015

# Children's Pages

(Adults can join in too)

Get your colouring pencils out





**SH**  
SIMON HOULDING  
EST. 1997

CURTAINS | UPHOLSTERY | BLINDS | SHUTTERS | INTERIOR DESIGN  
**QUALITY IN EVERYTHING WE DO**  
www.simonholding.co.uk | 01621 859 484 | 07990 972 676

**Mannequin**  
INTERIORS  
BY RUTH HOULDING

winner of  
Maldon 2024  
Conservation  
Awards

# **DJWAIT** **AND SON**

also  
highly  
commended  
Maldon 2024  
Conservation  
Awards

building contractors

*your complete, fully insured,  
family owned, building service*

**07742 957773**

**01621 334357**

**[www.djwaitandson.com](http://www.djwaitandson.com)**

# Recipe of the month

## One pan halloumi veggie traybake

### Preparation time

Less than 30 minutes

### Cooking time

10 to 30 minutes

### Serves

Serves 2



## Ingredients

- 1 large red onion, chopped into bite-sized pieces
- 3 mixed peppers, chopped into bite-sized pieces
- 1 large aubergine, chopped into bite-sized pieces
- 1 tbsp extra virgin olive oil, plus extra for drizzling
- 250g halloumi cheese, sliced
- small handful fresh basil
- freshly ground sea salt and black pepper

## Method

1. Preheat the oven to 220C/200C Fan/Gas 7.
2. Spread the vegetables across a large baking tray and toss with the oil and a generous amount of salt and pepper. Roast for 25 minutes, or until the vegetables are slightly browned and tender.
3. Heat the grill to it's highest setting.
4. Remove the tray from the oven and give it a big toss. Lay the halloumi slices on top of the vegetables, seasoning each with black pepper and an extra drizzle of olive oil.
5. Transfer the tray to the grill and cook for a further 5 minutes, or until the cheese has just started to turn golden brown.
6. Roughly tear the basil leaves and scatter over the halloumi bake just before serving.



## Answers to May crossword



## Answers to Kids Quiz

1. Africa
2. Wimbledon
3. 50 pence and 20 pence coins
4. Six
5. Dragon
6. China
7. United States of America
8. London
9. Cycling
10. Beavers



## Website of the Month

Your editors present a quirky, interesting, surprising or who-knows-what website that may be of interest. Hand-curated by your intrepid cybernaut navigators Chris and Stephen 😊

<https://www.sciencenewstoday.org>

All sorts - Biology, Chemistry, Medicine, Earth Sciences, Archeology and more. Who doesn't love a bit of science?



## Oven temperature conversions

Centigrade	Farenheit	Gas Mark
140°C	275°F	1
150°C	300°F	2
160°C	325°F	3
180°C	350°F	4
190°C	375°F	5
200°C	400°F	6
220°C	425°F	7
230°C	450°F	8
240°C	475°F	9

## Mobile Library dates & times

Dates	Location	Stop name	Arrives	Leaves
<b>2026</b> <b>10th June</b> 1st July 22nd July 12th August	Ulting	Doe's Corner	9:40	9:55
	Ulting	Ulting Lane/Water Co. Houses	10:00	10:15
	Heybridge	Colne House	10:45	11:15
	Heybridge	Coopers Avenue	11:20	11:50
	Heybridge Basin	Bus Stop	12:00	12:15
	Heybridge Basin	Daisy Meadows car park	12:20	12:50
	<b>Goldhanger</b>	<b>Village Hall</b>	<b>13:10</b>	<b>13:40</b>
	Heybridge	Plantation Hall	14:45	15:15
	Langford	Little Hills	15:30	16:00

### What goes where?

<p>food waste</p> 	
<p>plastics, food tins, drinks cans, foil, aerosols drink cartons newspapers, paper, card, telephone directories</p> 	<p style="writing-mode: vertical-rl; transform: rotate(180deg);">Pink</p> 
<p>glass bottles, jars</p> 	 <p style="text-align: center;">Black or Blue</p>
<p>Non-recyclable for landfill</p> 	 <p style="text-align: center;">Black</p>

### Essex Police Contacts

#### Call 999 (emergency) if:

- A crime is in progress
- Person suspected of a crime nearby
- There is a danger to life
- Violence is being used or threatened

#### Call 101 for any non-emergency contact with the Police.

This number covers all of England and Wales but you get the option to speak to Essex Police. Alternatively you can report a crime and more at <https://www.essex.police.uk/do-it-online/>

#### The Goldhanger Neighbourhood Watch

email system is free & confidential. It sends emails with information & advice on current issues in the village. Contact [goldhangernw@outlook.com](mailto:goldhangernw@outlook.com) for more information.

**Our collection day is Tuesday;  
Landfill and Recycling on alternate weeks.**

**Last post collection times:  
9am Monday to Friday 7am Saturday**

Crimestoppers

0800 555 111

You can contact them anonymously with information about crime

# BUS TIMETABLE

Monday to Friday

## Tollesbury ▶ Goldhanger ▶ Heybridge ▶ Maldon

95

95A

**Mondays to Fridays** excluding bank holidays

Route	95A	95	95	95	95	95
Code	Sch	NSch				
Tollesbury, The Square	0730	0732	0932	1142	1432	1612
Tolleshunt D'Arcy, The Red Lion	0735	0737	0937	1147	1437	1617
Goldhanger, Rectory Corner	0741	0743	0943	1153	1443	1623
Heybridge, Osea Road	0747	0749	0949	1159	1449	1629
Heybridge, Heybridge Basin	0754					
Heybridge, Bentalls Shopping Centre	0759	0755	0955	1205	1455	1635
Maldon, Tesco Store		0758	0958	1208	1458	1638
Maldon Town Centre, The Swan Hotel		0801	1001		1501	
Maldon, Blackwater Leisure Centre		0805	1005		1505	
Maldon, Morrisons Wycke Hill		0810	1010		1510	
Maldon Town Centre, The White Horse	0808			1211		1641
Maldon, Upper Plume School	0810					
Maldon, Lower Plume School	0815					

## Maldon ▶ Heybridge ▶ Goldhanger ▶ Tollesbury

95

95A

**Mondays to Fridays** excluding bank holidays

Route	95	95	95	95A	95	95
Code				Sch	NSch	
Maldon, Upper Plume School				1520		
Maldon, Lower Plume School				1525		
Maldon, Morrisons Wycke Hill		1016			1525	
Maldon, Blackwater Leisure Centre		1020			1529	
Maldon Town Centre, The Swan Hotel	0825	1025	1225	1528	1534	1655
Maldon, Tesco Store	0829	1029	1229	1532	1538	1659
Heybridge, Bentalls Shopping Centre	0832	1032	1232	1535	1541	1703
Heybridge, Heybridge Basin				1542		
Heybridge, Osea Road	0837	1037	1237	1546	1546	1708
Goldhanger, Rectory Corner	0841	1043	1243	1553	1553	1715
Tolleshunt D'Arcy, The Red Lion	0847	1048	1248	1558	1558	1720
Tollesbury, The Square	0852	1054	1254	1605	1604	1726

**Codes**

**Sch** Runs on school days only

**NSch** Runs when schools are closed

# BUS TIMETABLE

Saturday

## Tollesbury ▶ Goldhanger ▶ Heybridge ▶ Maldon

95

### Saturdays

Tollesbury, The Square	0942	1142	1432
Tolleshunt D'Arcy, The Red Lion	0947	1147	1437
Goldhanger, Rectory Corner	0953	1153	1443
Heybridge, Osea Road	0959	1159	1449
Heybridge, Heybridge Basin			
Heybridge, Bentalls Shopping Centre	1005	1205	1455
Maldon, Tesco Store	1008	1208	1458
Maldon Town Centre, The White Horse	1011	1211	1501

## Maldon ▶ Heybridge ▶ Goldhanger ▶ Tollesbury

95

### Saturdays

Maldon Town Centre, The Swan Hotel	1025	1225	1425	1625
Maldon, Tesco Store	1029	1229	1429	1629
Heybridge, Bentalls Shopping Centre	1032	1232	1432	1632
Heybridge, Heybridge Basin				
Heybridge, Osea Road	1037	1237	1437	1637
Goldhanger, Rectory Corner	1043	1243	1443	1643
Tolleshunt D'Arcy, The Red Lion	1048	1248	1448	1648
Tollesbury, The Square	1053	1253	1453	1653

### The Blackwater Link - 90

Runs from Morrisons in Maldon to Witham Ebenezer Close (passes Witham Station)

Take the 95 to Bentalls and pick up the 90 there.

For more details contact 01702-541511

#### Hedingham Omnibuses:

01206 769778  
[www.hedingham.co.uk](http://www.hedingham.co.uk)

#### Stephenson's Buses:

For the Blackwater Link - 90  
01702 541511 (0900-1730)  
[www.stephensonsofsex.com](http://www.stephensonsofsex.com)

## HEALTH

Blackwater Medical Centre	876760
Longfield Medical Centre	876433
Tollesbury Surgery	869204
St Peter's Hospital <i>NHS</i> (Maldon - no A&E)	725323
Broomfield Hospital <i>NHS</i> (Chelmsford, has A&E)	01245 362000
Colchester General Hospital <i>NHS</i> (has A&E)	01206 747474
NHS Advice (non-emergency)	111



## LOCAL PUBLIC SERVICES

Maldon District Council	854477
Job Centre Chelmsford	0845 606 0234
Local Police (non-emergency)	101 ( <i>puts you through to Essex Police</i> )

## HELP & ADVICE

Maldon Citizens Advice Bureau	841195
Social Services	08457 430 430
Victim Support (charity for victims of crime)	08 08 16 89 111
Women's Aid	01245 493114
Alcoholics Anonymous	01904 644026
Childline	0800 1111
Universal Credit Helpline	0800 328 5644
Salvation Army	853942
Gingerbread (Charity for single parents)	01245 352708
Outhouse East (LGBT Charity)	01206 871394 ( <i>7pm-10pm weekdays</i> )
National Domestic Abuse/Violence Helpline	0808 2000 247 ( <i>open 24 hrs, every day</i> )

## ELECTRICITY & WATER

UK Power Networks	0800 783 8838
Anglian Water (Sewage flooding)	03457 145 145
Essex & Suffolk Water	0345 782 0999

## TRAVEL

National Rail Enquiries	0845 748 4950
Hedingham Omnibuses Ltd	01206 769778 or 564581
Regal Busways	01245 249001
First Eastern National Buses	0845 678 2977
Bus Station Chelmsford	<b>01245 263859</b>
Bus Station Colchester	01206 572478
Stansted Airport	0844 335 1803

## SPORTS CENTRES

Blackwater Leisure Centre	851898
Witham Leisure Centre	0845 260 1535