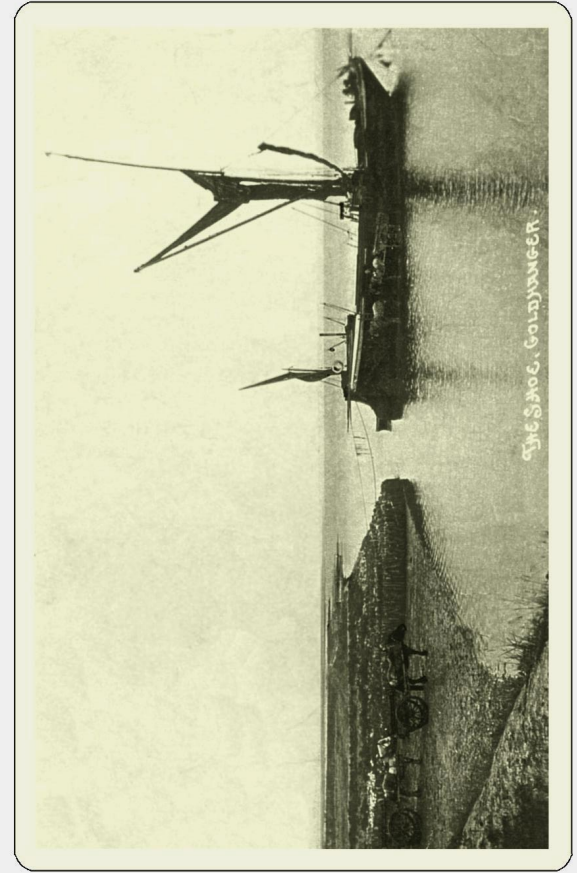


Postcard scenes of the Creek



# 131 Years of Goldhanger Parish Magazine

There has been a Parish Magazine since 1895 when the Revd. Frederick Gardner started it shortly after being appointed Rector at Goldhanger and there have only been a few breaks in publication, most notably during both World Wars.

## Deadlines:

**Submit articles, as PDF to preserve layout or as plain text in an email with any images attached, by midnight on the 15th of March. Please contact the editors if you have any questions about your article.**

**Submit advertising (including For Sale and Wanted) by midnight on the 13th of March please.**

**Magazine Editors:** Stephen & Chris      parishmag@goldhanger.org.uk

**Advertising** (for  
Magazine & Website)      Mel      advertising@goldhanger.org.uk

**For Sale or Wanted** - To list your items in the magazine the minimum donation is £1 per advert. If you would like to donate more it would always be welcome.

**Please note:** We cannot guarantee the delivery date of your magazine. Please bear this in mind when advertising functions at the beginning of the month.

**Donations:** Cheques made payable to **Goldhanger Parish Magazine**. You can also donate online through the Goldhanger website. If you would like to pay by BACS please contact the editors.

You can **download the Parish Magazine** in glorious technicolour each month, including back issues, at: <https://www.goldhanger.org.uk/parish-mag.html> - and the links work in the PDFs.

## Tide Times

<https://www.goldhanger.org.uk/index.html>

<https://www.tidetimes.co.uk/maldon-tide-times>





## From the Editors

**I**t's that time of year again. You should have a donation envelope with your magazine. We appreciate every penny you give and it all goes towards keeping the magazine bright and cheerful.

If you wish to donate by card go to [goldhanger.org.uk/parish-mag.html](http://goldhanger.org.uk/parish-mag.html) and scroll down to the Donate button. If you would like to donate by BACS please use the following:

Bank Sort Code: 40-31-35

Account no: 21314327

Account name is **St Peter's Church Goldhanger Parish Magazine** which is how the payment should show on your bank statement.

Thank you

Stephen & Chris

# The Goldhanger GALLOPERS!

## All Abilities Running Club!

CALLING ALL PEOPLE OF GOLDHANGER!  
MEET WEDNESDAYS

7.20PM WARMUP, 7.30PM START

AT ST. PETER'S CHURCH COMMUNITY ROOM.

RUNNING IS FANTASTIC FOR MENTAL, PHYSICAL  
AND EMOTIONAL WELL-BEING. IT IS ALSO A  
FANTASTIC WAY TO CONNECT AND SOCIALISE.

STRETCH, CHAT & REFRESHMENTS AFTER.

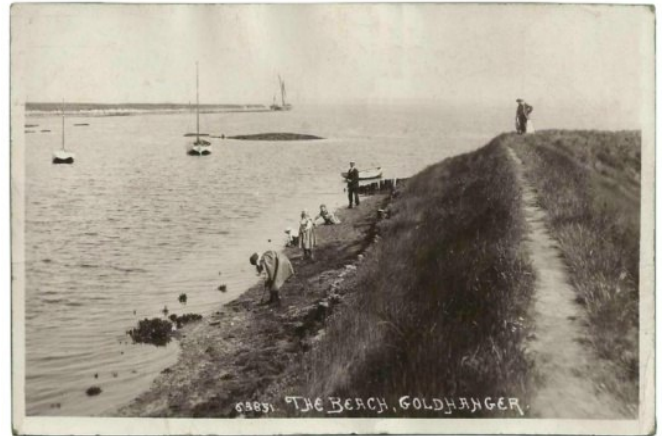
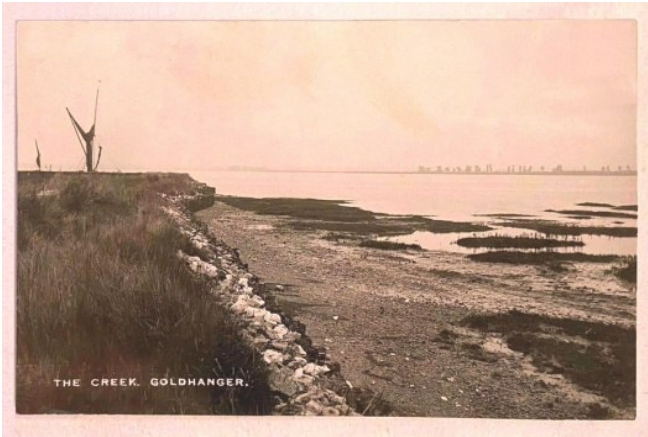
FOR FURTHER INFORMATION CONTACT

RACHEL.NEWENHAM@GMAIL.COM

WALK AND TALK GROUP INCLUDED

## Postcard scenes of the Creek in the past

Of the many early postcard images we have of the village, a considerable number are scenes of Goldhanger Creek. Sadly the village fishing fleet disappeared well before the days of photography, but these pictures show how the Creek and Estuary have always played an important part of village life and been used for both pleasure and by barges for commercial use...



search for: *goldhanger creek scenes*

<http://www.churchside1.plus.com/Goldhanger-past/Estuary%20Postcards%20.htm>

David Newman

# Mark Owers

Jules, David & all the family would like to say a massive thank you to everyone in the village. For all the love, help & support to us all over the last year & to all of you for coming to give Mark such a lovely send off. So many people there that had known Mark through all stages of his life which was just perfect.

Thank you to Andrew for a beautiful service & to Dom and all the wonderful staff in The Chequers, you did him proud.

I know that we all say it, but Goldhanger is a very special place, made up of some wonderful people.



## *Bakers of Danbury Ltd*

*High quality craftsmanship*

**CONSERVATION | RESTORATION | NEW BUILD**

Our project management team and in-house expert tradesmen have long been associated with the many fine historic, churches and listed buildings within the Essex area:

As building contractors we offer:

- Repair and restoration to historical & listed buildings
- Contemporary domestic and commercial conversions
- Luxury new build extensions
- Traditional timber windows and doors
- Bespoke joinery and furniture
- Polite tradesmen and minimal disruption

**T: 01245 225876**

**W: [www.bakersofdanbury.co.uk](http://www.bakersofdanbury.co.uk)**

**E: [info@bakersofdanbury.co.uk](mailto:info@bakersofdanbury.co.uk)**



*Established over 145 yrs*



# Goldhanger Village Hall



A modern venue for birthday parties, discos, children's parties, quiz nights & theme nights.

Comfortably seats 80 people using our chairs and tables - you are welcome to bring your own enabling you to seat more.



See [Village Hall Calendar](#) for more details of events.

**Pink recycling bags** are available 15 minutes before each Parish Council meeting every 2nd Wednesday of the month from 7.15pm. Purple bags are no longer available.

**Gentle Yoga** every Monday 7-8pm

*Nikki Myers 07963 785718, [youtimeyoga@live.co.uk](mailto:youtimeyoga@live.co.uk)*

**Chair Yoga** every Wednesday 11am

*Nikki Myers 07963 785718, [youtimeyoga@live.co.uk](mailto:youtimeyoga@live.co.uk)*

**Parish Council** second Wednesday of the month 7:30-9:30pm

**Karate** every Thursday 6-8pm

**Art Club** second Thursday of the month 2-4pm

*Catherine 01621 788488*

**Film Club** third Wednesday of the month (*except July and August*), doors open 7pm, film 7:30pm see *advert for details*

**Carpet Bowls** alternate Fridays from Friday 12th September to April 2026. 1.45pm to 4.00 pm

## Village Hall Bookings

Contact Jackie Christy on 788432 or:  
<http://www.goldhangervillagehall.co.uk/bookings/#form>

Web: [www.goldhangervillagehall.co.uk](http://www.goldhangervillagehall.co.uk)

Facebook: [Goldhanger Village Hall](#)

X: [@Goldhanger\\_VH](#)

Hire charges		Goldhanger Resident Rate (per hour)	General Rate (per hour)
Monday-Friday	9.00 -18.00	£12	£14
	18.00 - 23.00	£17	£20
Saturday-Sunday	9.00 - 18.00	£17	£20
	18.00 - 23.00	£22	£27

# Community Page

## **Bellringing** [www.bellringing.org/learntoring/](http://www.bellringing.org/learntoring/)

Every Wednesday 7:30pm - 9:30pm and for services on Sundays. Newcomers welcome. Contact Sarah Scannell 07789 990942 or email [goldhangerbells@outlook.com](mailto:goldhangerbells@outlook.com).



## **Coffee mornings**

Community Room at St. Peter's Church on Tuesdays between 11am and 12noon. Everyone is welcome. Pop along, bring your friends, and have a chat over coffee.



## **Shanties in the Pub**

Billiards room at the Chequers every other Tuesday (from 12th October) from 7pm. Just join in the responses or take a lead as you wish. Ooo-Aaaar!



## **AVAGO**

Open evening at the Chequers. Monthly. Billiards room from 4pm. Dates will be published in the magazine monthly.



## **Goldhanger Sailing Club** [www.goldhangersailingclub.org.uk](http://www.goldhangersailingclub.org.uk)

All types of sailing, including sailboarding and canoeing, with racing organised on Sundays during the season, there is something for everyone who loves the water.



## **Mother's Union**

4th Friday of each month at 1.45pm at Honywood Hall, Hall Road, Great Totham.



## **Stamps for the Hospice**

Your used stamps can be dropped in to the Hospice shops in Maldon or the Bentalls Centre in Heybridge.



## **Maldon District Council Monthly Surgeries**

1st Saturday of the month. Queens Head Tolleshunt D'Arcy. 12 noon to 1pm.



## **The Goldhanger Gallopers**

All abilities running club. Wednesday evenings at St. Peter's Church Community Room at 7:20pm.



# Goldhanger Church Services

Sunday 1st March: 9.30am Holy Communion

Sunday 8th March: 10am Lay Led service

Sunday 15th March: 9.30am HC for Mothering Sunday

Sunday 22nd March: 9.30am BCP Communion

## Weekday Holy Communion Services

Weekday Holy Communion service from The Book of Common Prayer

Every Wednesday at St Nicholas, Tolleshunt D'Arcy at 10.00am

And every Saturday at All Saints, Little Totham at 5.30pm

Please get in touch with Rosie Pollock or the churchwardens if you are considering baptism for yourself or your children, confirmation, and weddings Please contact Rev'd Andrew or Rosie for funeral arrangements.

## **Parish Prayers**

If you would like someone, an event or concern, included in church prayers please contact Kim Evans on 788698 email [kwestwood58@aol.com](mailto:kwestwood58@aol.com) or George Bunting (details on next page). Votive candles are lit at Sunday Services.

## **Raise free donations for Goldhanger church through Easyfundraising**

Go to <https://www.easyfundraising.org.uk/causes/stpeterschurchgoldhanger> and join for free.

## **St. Peter's Church Book of Remembrance**

If there is someone special you would like to be included, please send an email with details to [Beckywillisbecky@btinternet.com](mailto:Beckywillisbecky@btinternet.com). There is no charge, but a donation to the upkeep of our beautiful church is always very much appreciated.

Thank you for your support. Please contact Rosie Pollock, for any queries or help.

I did a theatrical performance about puns once. It was a play on words.

# St. Peter's Church Goldhanger

**Priest in Charge of  
the Blackwater  
Benefice\***

**Vacancy**

**Associate Priest**

Reverend Andrew  
Vince (Assistant  
Agricultural Chaplain)

07952 144613  
[andrew.vince15@gmail.com](mailto:andrew.vince15@gmail.com)

**Church Wardens:**

Mr George Bunting

01621 929690  
[gvbunting@gmail.com](mailto:gvbunting@gmail.com)

Mrs B Abrey

01206 384394

**Safeguarding Officer**

**Vacancy**

**Benefice  
Administrator**

Rosie Pollock  
(For weddings,  
baptisms etc). Available  
on Tuesday and Friday  
mornings

07908 776750  
[office.blackwaterbenefice@gmail.com](mailto:office.blackwaterbenefice@gmail.com)

**Church flowers**

Mrs Elaine Clark

788686  
[elaclark@me.com](mailto:elaclark@me.com)

\* Goldhanger, Little Totham & Great Totham and Tollesbury, Salcott, Tolleshunt D'Arcy and Tolleshunt Major

St. Peter's Goldhanger website: [www.st-peters-church.goldhanger.org.uk](http://www.st-peters-church.goldhanger.org.uk)

## Flags for March

**Monday 9<sup>th</sup> March**



**Commonwealth Day**



# PC Doctor Operations Limited

**For all your computer requirements including:**

- Virus prevention, detection & removal
- Broadband, Networking, Wireless & Firewall set up
- Email & SPAM filtering
- Hardware Repairs & Upgrades
- Software Faults & Crashes
- Backup Solutions & Data Recovery
- Software Installation & Removal
- Hardware & Software Supplied
- Website Management • Computer Training



**Office: 01621 891064 • Mobile: 07990 565336**

**Email: [support@pcdocops.co.uk](mailto:support@pcdocops.co.uk)**

**Website: [www.pcdocops.co.uk](http://www.pcdocops.co.uk)**

Monthly subscription service available to provide complete "peace of mind" and allow you to spread the cost of your IT requirements. Please contact for further information.

## Allotments.

If you would like an allotment please phone or e-mail

Clive Cheeseman

[cheeseman3@sky.com](mailto:cheeseman3@sky.com)

01621 788433



[chelmsfordplumbingandheating.co.uk](http://chelmsfordplumbingandheating.co.uk) | [sales@chelmsfordplumbingandheating.co.uk](mailto:sales@chelmsfordplumbingandheating.co.uk)



# CHELMSFORD PLUMBING & HEATING

## 01245 478588

**A trustworthy family run business specialising in Gas,  
Oil, LPG, Electrical & Plumbing services**

- ✓ All calls are answered personally
- ✓ Confirmed bookings given
- ✓ No job too small!

### Boiler Installs, Servicing & Repairs

### New Heating Systems

### Plumbing Repairs

### Electrical Services



## Easter Lilies

Let me know if you would like a Lily in church in memory of a loved one .



You might prefer to give a donation as price isn't known until Easter .We try to have a collection of Lilies to suit everyone .

With thanks  
Elaine 01621 788686

## Easter garden

We will be having an Easter garden again . Children if you would like to come along on Easter Saturday morning at about 10.30 to decorate the garden either with your own small posies or the ones we provide we will be pleased to see you.

Elaine



## BARBERS GARDENS

A CUT ABOVE THE REST

### GARDENING SERVICES

Here to tidy up your garden!

Even if it's just a trim, give us a call.

07986011237

barbersgardens@gmail.com

ANY QUESTIONS, PLEASE CONTACT  
US NOW.



# Goldhanger Village Hall Film Club



**Wednesday 18th March**  
7pm for 7:30pm



True life story of John Davidson. Diagnosed with Tourette's at 15, targeted as 'insane' by his peers, he struggled with a condition few had witnessed. Campaigning for better understanding and acceptance of the condition of Tourette's as an adult, he finds his life's purpose and accepted his MBE from the Queen in 2019.

A beautifully heartwarming journey that pulls you through waves of laughter and tears, again and again. A must see!!

**£8 pay on the door (card or cash)**

Wine, soft drinks & ice creams available

Plenty of parking behind the hall / lifts available from the village if required,  
contact Jill 07734 069609 or Debbie 788709



Proceeds in support of the Village Hall, Head Street CM9 8AY



## AVAGO

### Open evening at the Chequers

Have you ever wanted to:

Sing a song?

Play your musical instrument?

Read some poetry or prose?

Do a little stand-up routine?

Well, now's your chance to **AVAGO**.

The next event will be in the billiard room of the Chequers on **Sunday 12th April 2026** from 4pm.

Supportive audience also required.



## SPEEDWATCH GROUP

We need your help.

It only takes 2 hours each week and availability during daylight hours.

Full training is given and whilst it's a serious topic, we are a friendly and Happy group

To help us try to prevent an accident in our village streets – please email

[greg.lake@icore-ltd.com](mailto:greg.lake@icore-ltd.com)



# A.G. Smith

Est. 1912

## Funeral Directors & Monumental Masons

- 24-hour caring, supportive, professional
- Private chapel of rest
- Religious and non-religious funerals
- Green & woodland funerals
- Mercedes Benz hearse & limousines
- Hand crafted memorials
- Funeral plans to give you peace of mind - Golden Charter Funeral Plan Introducer

**Maldon: 01621 854 293**

7 Spital Road, Maldon, CM9 6DY

**Southminster: 01621 774 557**

44 Station Road, Southminster, CM0 7EW

**[enq@agsmithfunerals.co.uk](mailto:enq@agsmithfunerals.co.uk)**



FUNERAL PLANS FROM  
**Golden Charter**  
Smart Planning for Later Life



**Serving our local community since 1912 | [www.agsmithfunerals.co.uk](http://www.agsmithfunerals.co.uk)**

# **GOLDHANGER PARISH COUNCIL**

**Notes of the Parish meeting held on the 11<sup>th</sup> Feb 2026. Full minutes can be viewed on the website or village noticeboard once they have been approved at the next Parish Council Meeting.**

[www.parish-council.goldhanger.org.uk](http://www.parish-council.goldhanger.org.uk)

[clerk.gpc@outlook.com](mailto:clerk.gpc@outlook.com)

## **Planning Applications**

26/00071 41 Fish Street GPC Support  
26/00032 15 Fish Street GPC Support  
26/00034 13 Fish Street GPC Support  
Decisions  
25/00915 33 Church Street Approved by MDC

## **Playing Field**

2 benches would be purchased

## **Speed watch Group**

There were 301 vehicles recorded from May 25 doing speeds of over 35mph in a 30 mph speed limit area, with 46 mph being the highest recorded speed.  
Vast majority were recorded on Maldon Road  
There will now be a regular report of monthly figures from Mar 26

## **Marigold Wood**

Thinning out work had been undertaken and residents are invited to help themselves to The logs for their own personal use

## **Bus Shelter**

Work would soon be undertaken at the bus shelter in the square

## **Assertion 10 Compliance – Section 1 of the AGAR**

It had been agreed to use Hugo Fox to make Goldhanger compliant regarding making us compliant regarding domain name, emails, website etc. The cost would be in the region of £30 per month for the package including new.gov emails for all members and £200 for the website.

## **Policies**

Code of Conduct and land and property register were reviewed

## **General**

s137 expenditure had been set for 2026/2027 at £11.60  
Quotation for Groundwork from MDC for 2026/2027 was agreed  
PC Briggs 4208119 is the new Community Officer  
Speakers were discussed for the AGM in April 26  
New allotment contracts and general information regarding allotments was discussed – to be finalised

Next Meeting on 11<sup>th</sup> March 2026 at 7.30pm

# The Chequers Inn



The Square, Goldhanger, Essex, CM9 8AS

Tel: 01621 788203

[www.thechequersgoldhanger.co.uk](http://www.thechequersgoldhanger.co.uk)

Great home cooked food. Several local suppliers used.  
Wonderful selection of cask ales, beers wines and spirits.

Great range of non-alcoholic drinks.

Pub games including bar billiards, darts and dominoes.

Dogs welcome.

Real fires and log burner.

Regular live music and events.

Great hospitality and friendly service.

Take away food, coffees, drinks & cakes available.

Dominic and the team look forward to welcoming you soon.

## Ministry Team's Message

Looking at the history of the Church of England, it never ceases to amaze me how it manages to evolve and survive, especially during times. I was delighted when five years ago Rev'd Tracey Caswell was appointed to the Blackwater Benefice and responsible for seven churches. Throughout this period, we had great fellowships, made new friends, and enjoyed sharing our faith together. I particularly enjoyed experiencing the different styles of worship in the different parishes, from the very traditional to more contemporary expressions of Church such as Café Church or Contemporary Worship in Tollesbury parish rooms.

Now it's all changed again! Instead of a seven-church benefice we are going to join a benefice of eighteen churches, split into four clusters, each with their own vicar. My church, Little Totham is joining the Beacon Group with Goldhanger, Great Totham and Wickham Bishops with Little Braxsted and, it has been an exciting time meeting even more Christians in the local area. As a group we had to decide on a name and, due to the location of some of our churches, we decided to be known as the Beacon Group. As you would expect of an ordinand, I wondered if there were any biblical reference about Beacons, and there are, Isaiah 30:17 mentions 'Like a Beacon on a hill.' A Beacon is not meant to draw attention to itself but to guide, warn and give hope. Our new group of churches should be Beacons to our local communities, bright lights pointing people to Jesus, sharing with people hope.

Beacons provide light to guide people, Jesus himself declares 'I am light of the world whoever follows me will not walk in darkness but will have the light if life' (John 8:12). We have just celebrated Christmas, the time when we celebrate the birth of Jesus coming as the light of the world. In a world clouded by confusion, fear and brokenness, Christ stands unchanging, illuminating our way, like a Beacon on a hill.

Every year I work with a local school assessing their Bronze Duke of Edinburgh expedition students, they begin their expedition at St Bartholomew church Wickham Bishops which is set at a high point. The students finish at All Saints Church Purleigh, again, the church is set on a hill, on a good day you can see both churches, they stand out showing the beginning of the walk and the end. In Matthew 5:14 Jesus tells his followers 'You are light of world, a city set on a hill cannot be hidden away.' Beacons are like churches, visible from far away offering direction, showing people the way, saving people from getting lost.

I continue to be excited about what God has planned for our area and I am also excited about our new clusters, I commend to you all our churches and recommend you try them out, find a service that you enjoy, it may not be in your village, but I bet you will find God in all our churches, whatever the tradition or the cluster.

GOLDHANGER VILLAGE HALL COMMITTEE

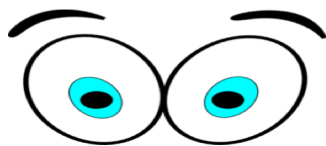
Invites you to



Saturday 7th March

THE VILLAGE HALL

Doors Open 7.00 pm



Eyes Down 7.30 pm

A FUN FAMILY EVENING!



Bring your own drinks & nibbles  
Refreshments & cakes will be served  
in the interval

# Carpets and Vinyls Seagrass, Sisal & Coir

From Nic Lawrence  
Your Local Fitter

Choose at Home  
Re-fits also undertaken  
No Job Too Small  
Free Estimates  
Very Reliable 25 Years Experience  
01621 869344  
07771 632028

Your home  
Your care  
Your choice



**a** alina homecare  
*Care at Home*

We offer a wide range of  
award winning home care  
helping you stay  
**independent in your own home.**

Our highly trained and  
compassionate carers  
**make life easier.**

Choose from regular visits or Live-in care.

Let's  
chat

**01621 983222**  
**alinahomecare.com**



Top 20 UK  
Home Care  
Group Award  
2021 - 2025





## Keeping the county warm



Fuel Services






Contact BFS for prompt delivery of your domestic heating oil direct from our local Danbury Fuel Services depot. You'll find no better service, no better value.

T 01245 425251 [www.bfsfuelservices.uk](http://www.bfsfuelservices.uk)

Christopher  
THE LOCKSMITH

### ARE YOUR LOCKS BEHAVING BADLY?

We Value Old Fashioned Customer Service  
A Local Trusted Family Business Since 1989

-  Specialist in UPVC & Wooden Doors
-  No Call Out Charge
-  No Fix No Fee
-  All Work Fully Guaranteed
-  10% Senior Citizen Discount



For More Advice & Help Call Christopher:

**07772 111 222**

[www.christopherthelocksmith.co.uk](http://www.christopherthelocksmith.co.uk)

If you would like a birthday or congratulations message (or any other message) included in the magazine then please let us know.

*(See inside front cover)*

Photos of village events are always very welcome.



# Megabrain Wordsearch 3 - Harry's Game

Difficulty level 2 (3 pts)

19 characters from the Harry Potter books are hidden in the grid below. But there is NO LIST to help you! When you've found all 19, the 35 unused letters read as a question to find a 20<sup>th</sup>. Email your answer to [pfrench2@hotmail.com](mailto:pfrench2@hotmail.com) to be immortalised in next month's magazine! Good luck!

Pete's tip: I've given you the mark of Potter to start you with some bits of three of them!

P	W	H	E	R	V	Y	E	W	D	A	E
E	L	Y	O	G	O	S	D	O	H	A	R
T	M	Y	R	T	L	E	O	O	R	R	O
T	Y	B	B	O	D	G	Y	S	O	F	D
I	R	S	U	R	E	V	E	S	I	M	E
G	E	Y	S	V	M	A	L	F	O	Y	L
R	G	E	O	P	O	S	G	R	S	T	B
E	N	L	A	D	R	D	K	N	R	L	M
W	A	S	U	E	T	O	S	N	A	S	U
I	R	A	N	P	T	H	U	C	O	H	D
E	G	E	B	O	I	O	K	T	K?	T	C
G	I	W	D	E	H	N	F	I	L	C	H

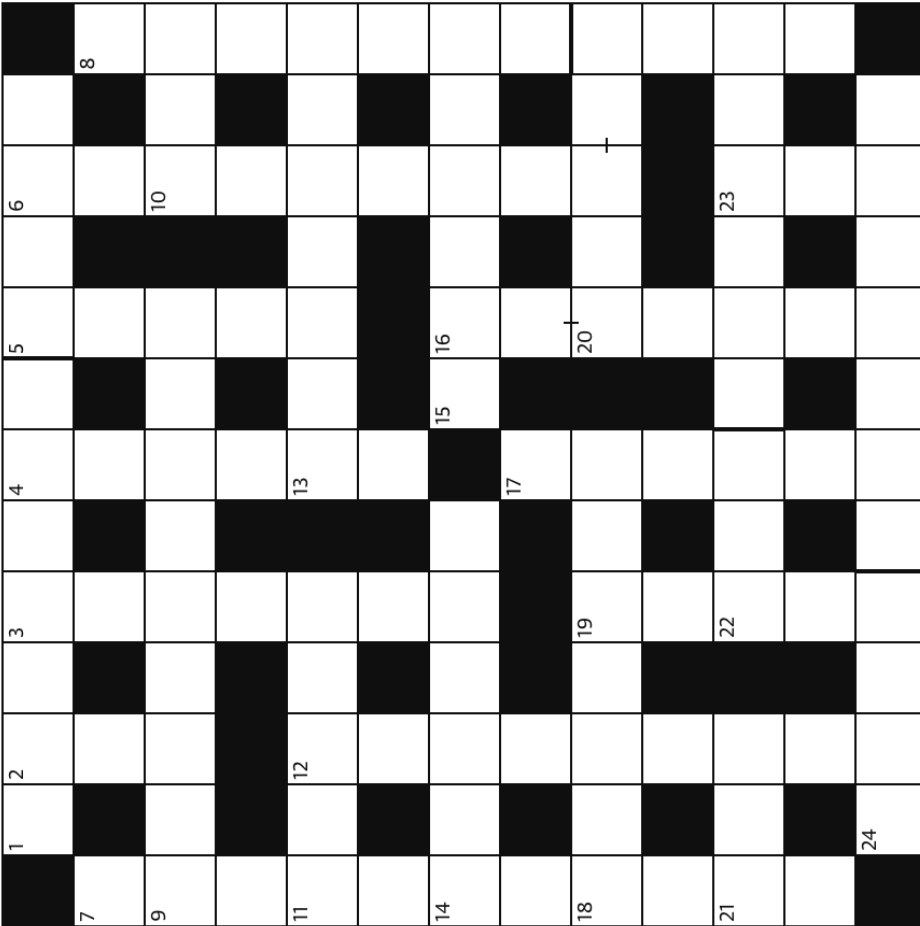
Note: Usual rules apply – diagonal, horizontal and vertical words forwards and backwards, letters can be used more than once and unused letters read as per a book to form the hidden question or clue.

**NB. The answer has 12 letters** (1, 6, 5)

Last month's hidden 'VILLAGE' clue was 'DOES VIC REEVES MATE LIVE HERE?' Answer: WOODHAM **MORTIMER**

The villages were (horiz.) Mundon, Baddow, Totham, Oxney, Nounsley, Knights (vert.) Darcy, Langham, Clarks, Norton, Layer, Steeple, Wickham, (diagonal) Goldhanger, Walter, Virley, Major, Stow, Ulting, Feering, Kelvedon

**Correct answers were received from Jill Crooks, Mo Brooks, Ruth Jolly, Carol Russell, David Harding, Lorraine Alford, Marion Everiss, Janet Craske, Julie Burge, Angela Elmore, George Bunting, Gary Wiggans and current champ Maureen Cheeseman – well done and 3 points to all of them.**



**Across**

- 1 Hare on a pail (anag) - instrument played by the wind (7,4)
- 9 Listening carefully (9)
- 10 Black stuff - sailor (3)
- 11 Avoid, perhaps illegally (5)
- 13 Bridged, arched over (7)
- 14 Becoming less severe (6)
- 15 Choice, possibility (6)
- 18 Black stuff - molasses (7)
- 20 Full English perhaps (3-2)
- 21 Crisp long-leaved lettuce (3)
- 22 Communicate effectively - or (as 3,1,5) vote? (3,6)
- 24 Data input devices used to take payments (4,7)

**Down**

- 2 Word before 'dirt' or 'humble pie' (3)
- 3 Transparent case (carried or hung) containing a light (7)
- 4 Surrounded by (6)
- 5 Laughing African carnivore (5)
- 6 Plumpness (9)
- 7 Cluedo weapon (11)
- 8 Store or settlement in remote area (7,4)
- 12 Sappy side (anag) - indigestion (9)
- 16 Solemn and humourless - like a Teletubby? (2-5)
- 17 Put this on for a cuppa (6)
- 19 Roman god of love (5)
- 23 Blade (3)

**Answers next month**

**Online games and puzzles to keep you amused**

Online games and puzzles: <https://www.games.co.uk/games/puzzle>

Online jigsaw puzzles: <https://www.jigsawplanet.com/>

Online brainteasers, maths puzzles, word games, sudokus and memory games: <https://www.mindgames.com/>

**DOMESTIC APPLIANCE  
REPAIRS**

Prompt and Reliable Service

Washing Machines—Dishwashers  
Tumble Driers—Fridges & Freezers

NEW APPLIANCES SUPPLIED  
AT COMPETITIVE PRICES

Also Large Stock of New & Used  
Spare Parts

PLEASE RING ALAN TAYLOR

01621 779640

Mobile: 07885 483595

Family Run Business  
Est. 20 yrs

>>> **Could YOU be a Blood Runner?** <<<



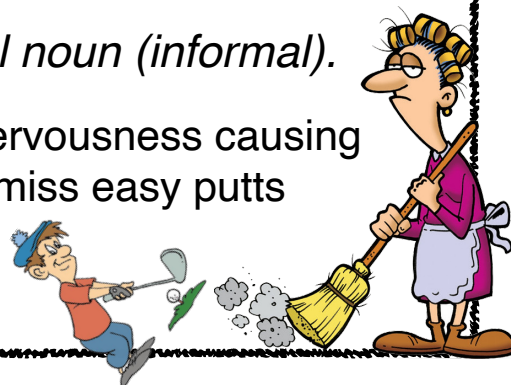
↓ See our article ↓

[EssexVoluntaryBloodService.com](http://EssexVoluntaryBloodService.com)

**Word of the Month**

*yips: plural noun (informal).*

Extreme nervousness causing  
a golfer to miss easy putts



**B P A Kennedy**  
**Plumbing and heating engineer**

Gas and oil boiler servicing/repair

New boilers

Central heating up grades/repair

New radiators

Desludging available

New bathrooms

Ball valves etc

**Telephone : 07786 954656 or 07879 643583**



**SH**  
SIMON HOULDING  
EST. 1997

CURTAINS | UPHOLSTERY | BLINDS | SHUTTERS | INTERIOR DESIGN  
**QUALITY IN EVERYTHING WE DO**  
www.simonholding.co.uk | 01621 859 484 | 07990 972 676

**Mannequin**  
INTERIORS  
BY RUTH HOULDING

winner of  
Maldon 2024  
Conservation  
Awards

**DJWAIT**  
**AND SON**

also  
highly  
commended  
Maldon 2024  
Conservation  
Awards

building contractors

*your complete, fully insured,  
family owned, building service*

**07742 957773**

**01621 334357**

**www.djwaitandson.com**

# Children's Pages

## Kids Quiz

1. What is the capital city of Italy?
2. What is the tallest mountain in the world?
3. Which ocean is the largest?
4. How many sides does a hexagon have?
5. What is the main ingredient in guacamole?
6. What's the currency of the UK?
7. Which two colours make purple?
8. What instrument has 88 keys?
9. How many bones are in the adult human body?
10. What is the name of the hero in the game Minecraft?

Answers on page 28

What do you call a sheep with no legs?

A cloud



**DID YOU KNOW?**

a hummingbird's heart  
beats at  
over a  
1,000  
times a  
minute



# Children's Pages

(Adults can join in too)

Get your colouring pencils out





# Memorial Stonemasons

Established in Danbury 1878

Bespoke hand-carved designs  
 Personal inscriptions  
 Restoration and cleaning

Contact us to discuss your requirements  
 and a free no obligation quotation

01621 502 262  
[agsmithfunerals.co.uk](http://agsmithfunerals.co.uk)  
[enq@agsmithfunerals.co.uk](mailto:enq@agsmithfunerals.co.uk)



**Bespoke memorials in association with AG Smith Funeral Directors**

# Broadleaf Fencing



For all your fencing needs

Call for a free estimate

01621 888621

07483 126957

[www.broadleaffencing.co.uk](http://www.broadleaffencing.co.uk)

- ✓ Experienced
- ✓ Competitively priced
- ✓ Highly rated



Supply and install fences & gates  
 Bespoke pergolas & decking  
 Fence & gate repairs  
 Paving & patios

# Recipe of the month

## Broccoli and Cauliflower soup

### Preparation time

Less than 30 minutes

### Cooking time

30 minutes to 1 hour

### Serves

Serves 4



### Ingredients

- 1 tablespoon olive oil
- 200g cauliflower florets (approx. ½ small cauliflower)
- ½ teaspoon cumin seeds
- freshly ground sea salt and black pepper
- 1 brown onion, roughly chopped
- 2 large garlic cloves, minced
- 1.2 litres vegetable stock
- 400g broccoli florets (approx. 1 small head broccoli, stem included)

### Method

- Preheat the oven to 200C/180C Fan/Gas 6. Toss the cauliflower florets with ½ a tablespoon of olive oil, cumin seeds and generous salt and pepper. Roast for 15 minutes on a baking tray until the florets are just starting to char.
- Heat the remaining oil in a large lidded saucepan over a medium heat. Gently fry the onion with a pinch of salt for 8–10 minutes until soft and slightly golden. Add the garlic and cook for a further minute until aromatic.
- Add the cooked cauliflower florets to the pan, as well as any cumin seeds left on the tray. Add the vegetable stock and the broccoli, turn up the heat and bring the soup to the boil, then reduce to a gentle simmer. Simmer with the lid on for 15–20 minutes until the broccoli and cauliflower are both tender.
- Using a stick blender, blitz the soup until smooth. Check the seasoning and serve.



## Answers to February crossword



## Answers to Kids Quiz

1. Rome
2. Mount Everest
3. Pacific Ocean
4. Six
5. Avocado
6. Pound sterling
7. Red and blue
8. A piano
9. 206
10. Steve



## Website of the Month

Your editors present a quirky, interesting, surprising or who-knows-what website that may be of interest. Hand-curated by your intrepid cybernaut navigators Chris and Stephen 😊

<https://police-auctions.org.uk/site/>

Seized goods, worth millions of pounds, are auctioned every year at police auctions, government auctions and bailiff auctions. You can pick up computers and laptops, electrical items, mobile phones and tablets, clothing and footwear, bikes, cars, vans and lots more!



## Oven temperature conversions

Centigrade	Farenheit	Gas Mark
140°C	275°F	1
150°C	300°F	2
160°C	325°F	3
180°C	350°F	4
190°C	375°F	5
200°C	400°F	6
220°C	425°F	7
230°C	450°F	8
240°C	475°F	9

## Mobile Library dates & times

Dates	Location	Stop name	Arrives	Leaves
<b>2026</b> <b>18th March</b> 8th April 29th April 20th May 10th June 1st July 22nd July 12th August	Ulting	Doe's Corner	9:40	9:55
	Ulting	Ulting Lane/Water Co. Houses	10:00	10:15
	Heybridge	Colne House	10:45	11:15
	Heybridge	Coopers Avenue	11:20	11:50
	Heybridge Basin	Bus Stop	12:00	12:15
	Heybridge Basin	Daisy Meadows car park	12:20	12:50
	<b>Goldhanger</b>	<b>Village Hall</b>	<b>13:10</b>	<b>13:40</b>
	Heybridge	Plantation Hall	14:45	15:15
	Langford	Little Hills	15:30	16:00

### What goes where?

<p>food waste</p>		
<p>plastics, food tins, drinks cans, foil, aerosols drink cartons newspapers, paper, card, telephone directories</p>		
<p>glass bottles, jars</p>		 <p><b>Black or Blue</b></p>
<p>Non-recyclable for landfill</p>		 <p><b>Black</b></p>

### Essex Police Contacts

#### Call 999 (emergency) if:

- A crime is in progress
- Person suspected of a crime nearby
- There is a danger to life
- Violence is being used or threatened

**Call 101 for any non-emergency contact with the Police.** This number covers all of England and Wales but you get the option to speak to Essex Police. Alternatively you can report a crime and more at <https://www.essex.police.uk/do-it-online/>

**The Goldhanger Neighbourhood Watch** email system is free & confidential. It sends emails with information & advice on current issues in the village. Contact [goldhangernw@outlook.com](mailto:goldhangernw@outlook.com) for more information.

**Our collection day is Tuesday;  
Landfill and Recycling on alternate weeks.**

**Last post collection times:  
9am Monday to Friday 7am Saturday**

**Crimestoppers**  
0800 555 111

You can contact them anonymously with information about crime

# BUS TIMETABLE

Monday to Friday

## Tollesbury ▶ Goldhanger ▶ Heybridge ▶ Maldon

95

95A

**Mondays to Fridays** excluding bank holidays

Route	95A	95	95	95	95	95
Code	Sch	NSch				
Tollesbury, The Square	0730	0732	0932	1142	1432	1612
Tolleshunt D'Arcy, The Red Lion	0735	0737	0937	1147	1437	1617
Goldhanger, Rectory Corner	0741	0743	0943	1153	1443	1623
Heybridge, Osea Road	0747	0749	0949	1159	1449	1629
Heybridge, Heybridge Basin	0754					
Heybridge, Bentalls Shopping Centre	0759	0755	0955	1205	1455	1635
Maldon, Tesco Store		0758	0958	1208	1458	1638
Maldon Town Centre, The Swan Hotel		0801	1001		1501	
Maldon, Blackwater Leisure Centre		0805	1005		1505	
Maldon, Morrisons Wycke Hill		0810	1010		1510	
Maldon Town Centre, The White Horse	0808			1211		1641
Maldon, Upper Plume School	0810					
Maldon, Lower Plume School	0815					

## Maldon ▶ Heybridge ▶ Goldhanger ▶ Tollesbury

95

95A

**Mondays to Fridays** excluding bank holidays

Route	95	95	95	95A	95	95
Code				Sch	NSch	
Maldon, Upper Plume School				1520		
Maldon, Lower Plume School				1525		
Maldon, Morrisons Wycke Hill		1016			1525	
Maldon, Blackwater Leisure Centre		1020			1529	
Maldon Town Centre, The Swan Hotel	0825	1025	1225	1528	1534	1655
Maldon, Tesco Store	0829	1029	1229	1532	1538	1659
Heybridge, Bentalls Shopping Centre	0832	1032	1232	1535	1541	1703
Heybridge, Heybridge Basin				1542		
Heybridge, Osea Road	0837	1037	1237	1546	1546	1708
Goldhanger, Rectory Corner	0841	1043	1243	1553	1553	1715
Tolleshunt D'Arcy, The Red Lion	0847	1048	1248	1558	1558	1720
Tollesbury, The Square	0852	1054	1254	1605	1604	1726

**Codes**

**Sch** Runs on school days only

**NSch** Runs when schools are closed

# BUS TIMETABLE

Saturday

## Tollesbury ▶ Goldhanger ▶ Heybridge ▶ Maldon

95

### Saturdays

Tollesbury, The Square	0942	1142	1432
Tolleshunt D'Arcy, The Red Lion	0947	1147	1437
Goldhanger, Rectory Corner	0953	1153	1443
Heybridge, Osea Road	0959	1159	1449
Heybridge, Heybridge Basin			
Heybridge, Bentalls Shopping Centre	1005	1205	1455
Maldon, Tesco Store	1008	1208	1458
Maldon Town Centre, The White Horse	1011	1211	1501

## Maldon ▶ Heybridge ▶ Goldhanger ▶ Tollesbury

95

### Saturdays

Maldon Town Centre, The Swan Hotel	1025	1225	1425	1625
Maldon, Tesco Store	1029	1229	1429	1629
Heybridge, Bentalls Shopping Centre	1032	1232	1432	1632
Heybridge, Heybridge Basin				
Heybridge, Osea Road	1037	1237	1437	1637
Goldhanger, Rectory Corner	1043	1243	1443	1643
Tolleshunt D'Arcy, The Red Lion	1048	1248	1448	1648
Tollesbury, The Square	1053	1253	1453	1653

### The Blackwater Link - 90

Runs from Morrisons in Maldon to Witham Ebenezer Close (passes Witham Station)

Take the 95 to Bentalls and pick up the 90 there.

For more details contact 01702-541511

#### Hedingham Omnibuses:

01206 769778  
[www.hedingham.co.uk](http://www.hedingham.co.uk)

#### Stephenson's Buses:

For the Blackwater Link - 90  
01702 541511 (0900-1730)  
[www.stephensonsofsex.com](http://www.stephensonsofsex.com)

## HEALTH

Blackwater Medical Centre	876760
Longfield Medical Centre	876433
Tollesbury Surgery	869204
St Peter's Hospital <i>NHS</i> (Maldon - no A&E)	725323
Broomfield Hospital <i>NHS</i> (Chelmsford, has A&E)	01245 362000
Colchester General Hospital <i>NHS</i> (has A&E)	01206 747474
NHS Advice (non-emergency)	111

A missing hare?  
Putting you through to the  
police.



## LOCAL PUBLIC SERVICES

Maldon District Council	854477
Job Centre Chelmsford	0845 606 0234
Local Police (non-emergency)	101 ( <i>puts you through to Essex Police</i> )

## HELP & ADVICE

Maldon Citizens Advice Bureau	841195
Social Services	08457 430 430
Victim Support (charity for victims of crime)	08 08 16 89 111
Women's Aid	01245 493114
Alcoholics Anonymous	01904 644026
Childline	0800 1111
Universal Credit Helpline	0800 328 5644
Salvation Army	853942
Gingerbread (Charity for single parents)	01245 352708
Outhouse East (LGBT Charity)	01206 871394 ( <i>7pm-10pm weekdays</i> )
National Domestic Abuse/Violence Helpline	0808 2000 247 ( <i>open 24 hrs, every day</i> )

## ELECTRICITY & WATER

UK Power Networks	0800 783 8838
Anglian Water (Sewage flooding)	03457 145 145
Essex & Suffolk Water	0345 782 0999

## TRAVEL

National Rail Enquiries	0845 748 4950
Hedingham Omnibuses Ltd	01206 769778 or 564581
Regal Busways	01245 249001
First Eastern National Buses	0845 678 2977
Bus Station Chelmsford	<b>01245 263859</b>
Bus Station Colchester	01206 572478
Stansted Airport	0844 335 1803

## SPORTS CENTRES

Blackwater Leisure Centre	851898
Witham Leisure Centre	0845 260 1535